

How to use MatrixTV with TBS USB tuner V1.0

MatrixTV is a customized operating system based on Linux, XBMC and VDR are integrated in the system to make it an all-in-one system for watching digital Live TV, extra software for playback is no need to be installed, it is the default OS when you get your Matrix. In this guide, we are going to show you how to use Matrix running MatrixTV together with a TBS USB tuner to watch digital Live TV.

Matrix is a powerful ARM mini PC that can work together with TBS USB tuner for watching digital TV, the supported TBS USB tuners are on list below:

DVB-S2/S

- TBS5922 DVB-S2 TV Tuner USB Box (discontinued)
- TBS5922SE DVB-S2 TV Tuner USB Box
- TBS5925 Professional DVB-S2 TV Tuner USB Box
- TBS5980 DVB-S2 TV Tuner CI USB Box
- TBS5990 DVB-S2 Dual Tuner Dual CI USB Box

DVB-T2/T/C

- TBS5220 USB DVB-T2 / T / C Tuner TV Stick
- TBS5280 USB DVB-T2/T Dual Tuner TV Box (discontinued)
- TBS5281 DVB-T2/T/C Dual Tuner TV USB Box
- TBS5880 USB DVB-T2/T/C CI TV Box (discontinued)
- TBS5881 USB DVB-T2/T/C CI TV Box

DVB-C

- TBS5680 DVB-C TV Tuner CI USB Box
- TBS DVB-C Stick (TBS5610)

** more new models will be added to the list, the details and update can be found on:*

<http://www.tbsdtv.com/launch/tbs-2910-matrix-arm-mini-pc.html>

Before we get started, we should check and make sure:

The firmware of Matrix is up-to-date, the latest firmware is available in the download section below:

<http://www.tbsdtv.com/download/>

and the following things are ready for use:

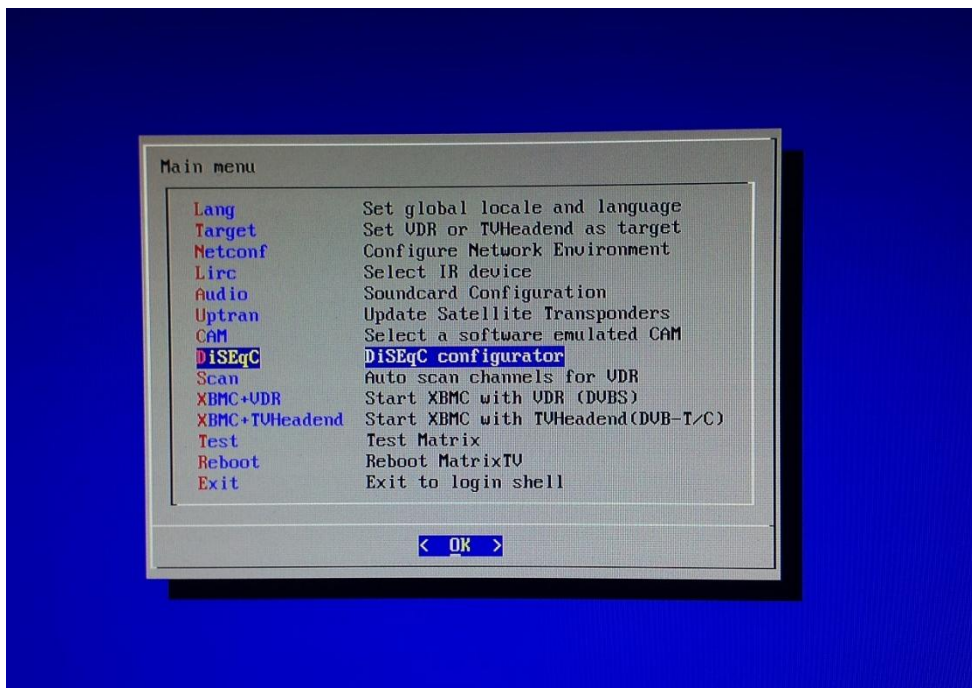
- 1x Matrix (included power supply)
- 1x USB keyboard
- 1x USB mouse
- 1x network cable
- 1x TBS USB tuner
- DVB-S2/T2/C signal (in our test below we use TBS5990, so DVB-S2 signal is required)

After an USB keyboard, an USB mouse and a network cable is connected to Matrix, power on Matrix, we will notice that:

- The blue LED light blink 3 times
- The fan turns only 1 round

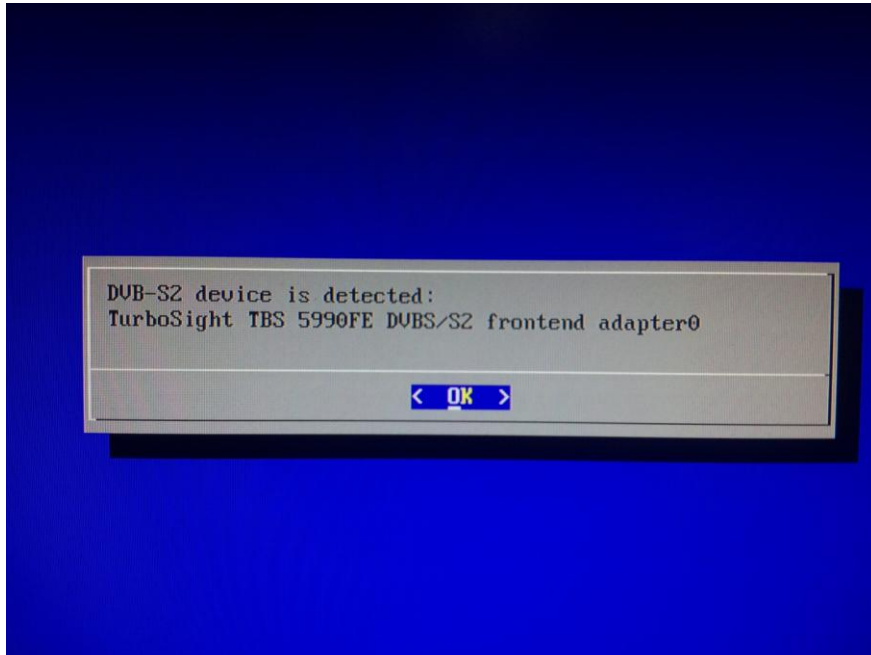
This means the Matrix we are about to test works normally, if one of those two signal is missing, the matrix might not be able to boot or work.

When it begins to load the system, we can press any key to enter to system settings, on the settings main menu, go to: **DiSEqC --> OK**

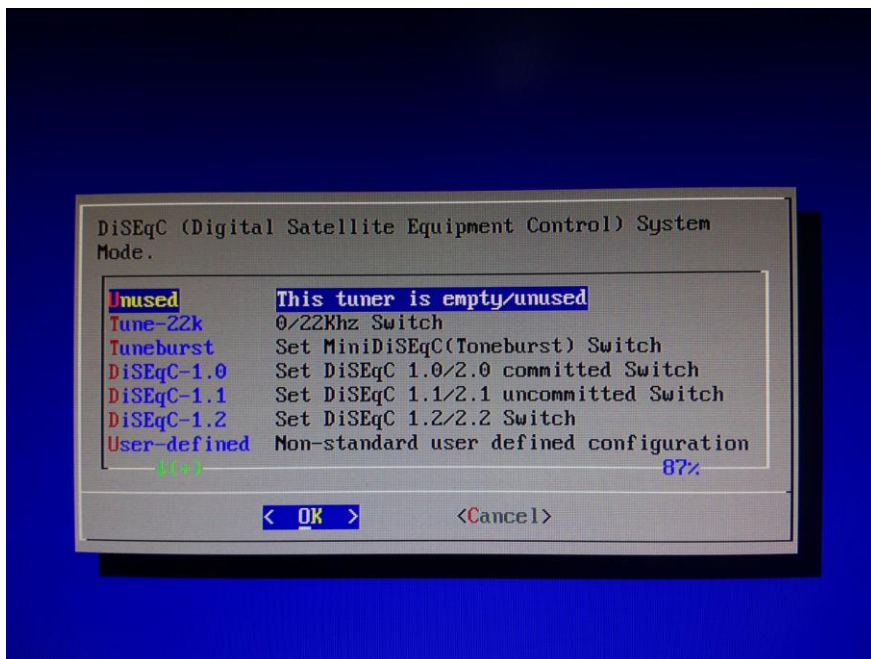


In this test, we are using TBS5990 (other USB tuners from the supported list above can be used), after we click **OK**, the USB tuner can be detected, in our test, it shows:

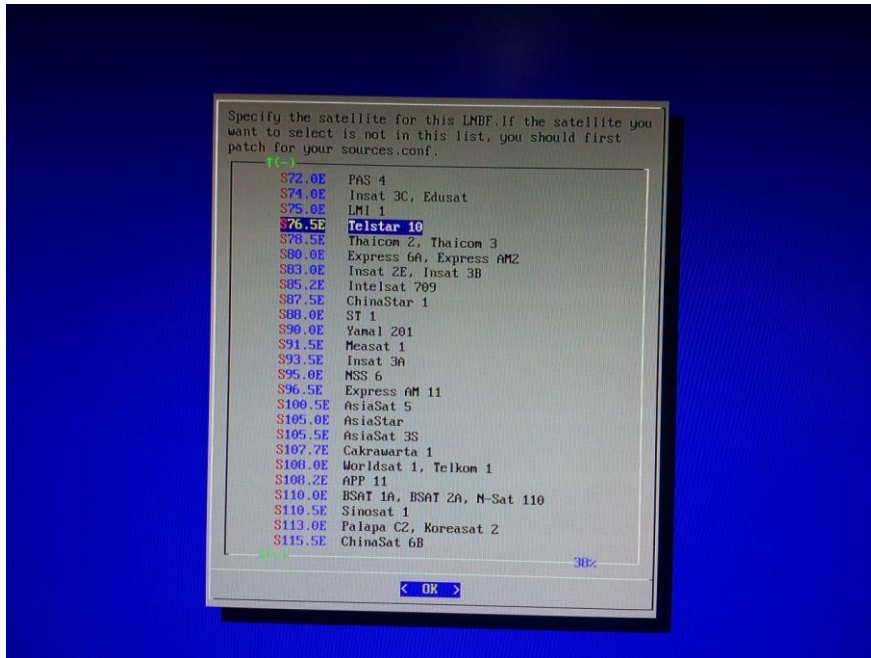
DVB-S2 device is detected



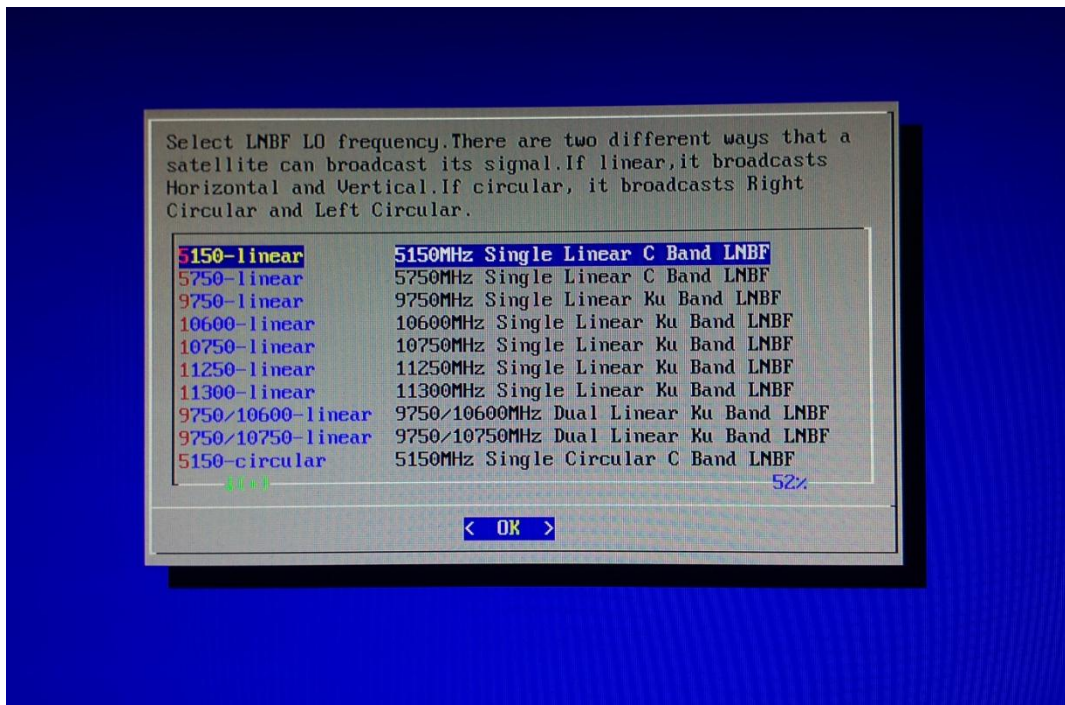
Click **OK**, and then we can select the right DiSEqC type that we need to use from the list below;



Click **OK**, and then we need to specify the satellite for LNBf;

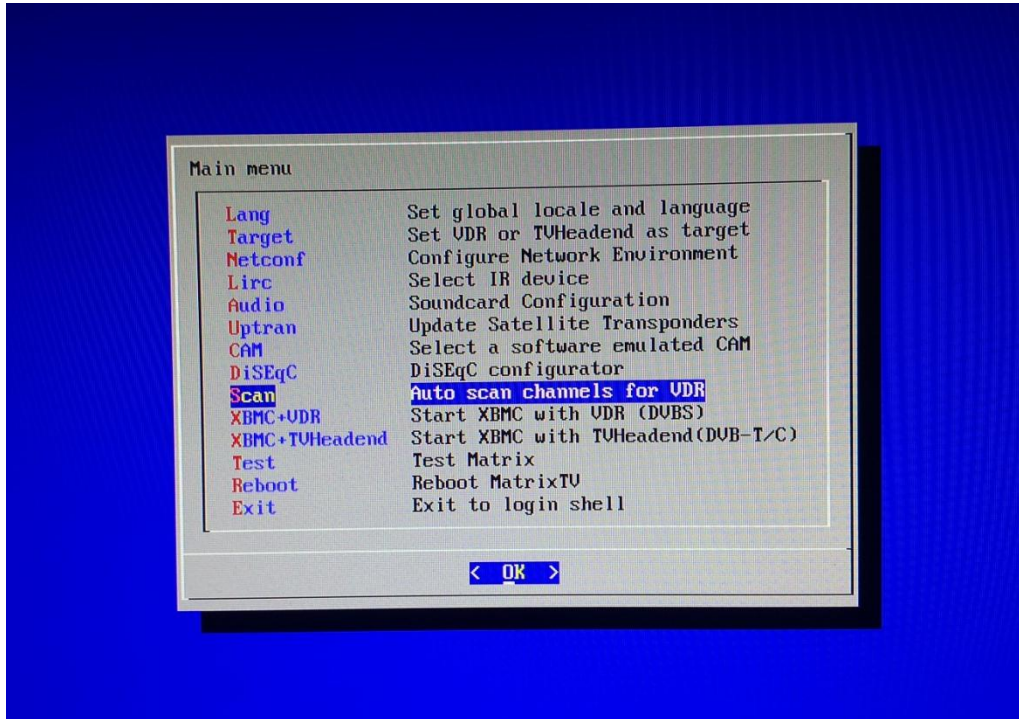


Click **OK**, and then set the LNBf from a list of frequencies;

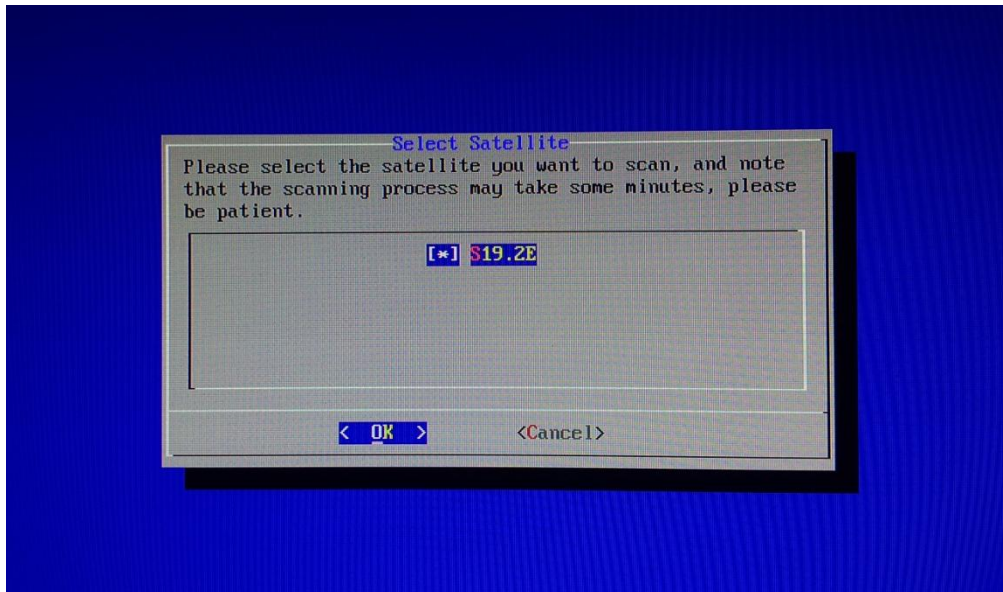


Click **OK**, and then go down the list of main menu to **Scan**

Auto scan channels for VDR



Click **OK**, and then select the satellite, from which we want to receive Live TV channels;



Click **OK**, now the settings for the TBS5990 to receive satellite Live TV is done.

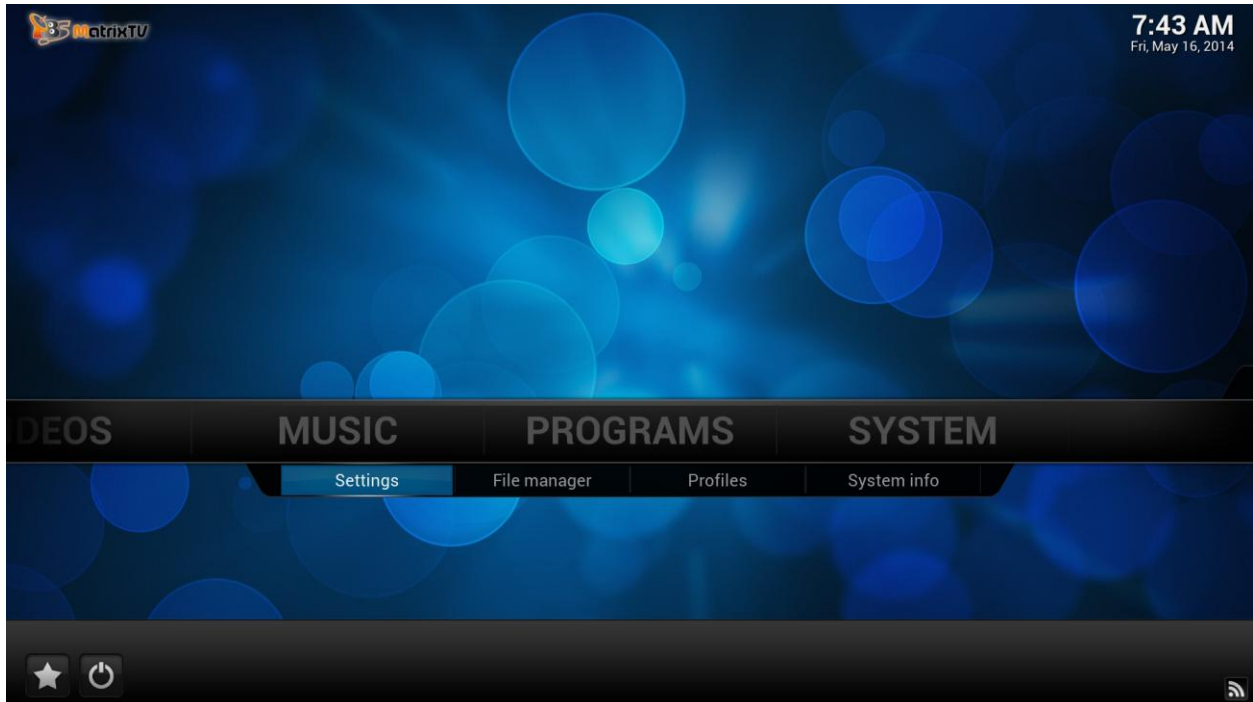
After a few seconds, we can see both the blue and green LED lights are on.

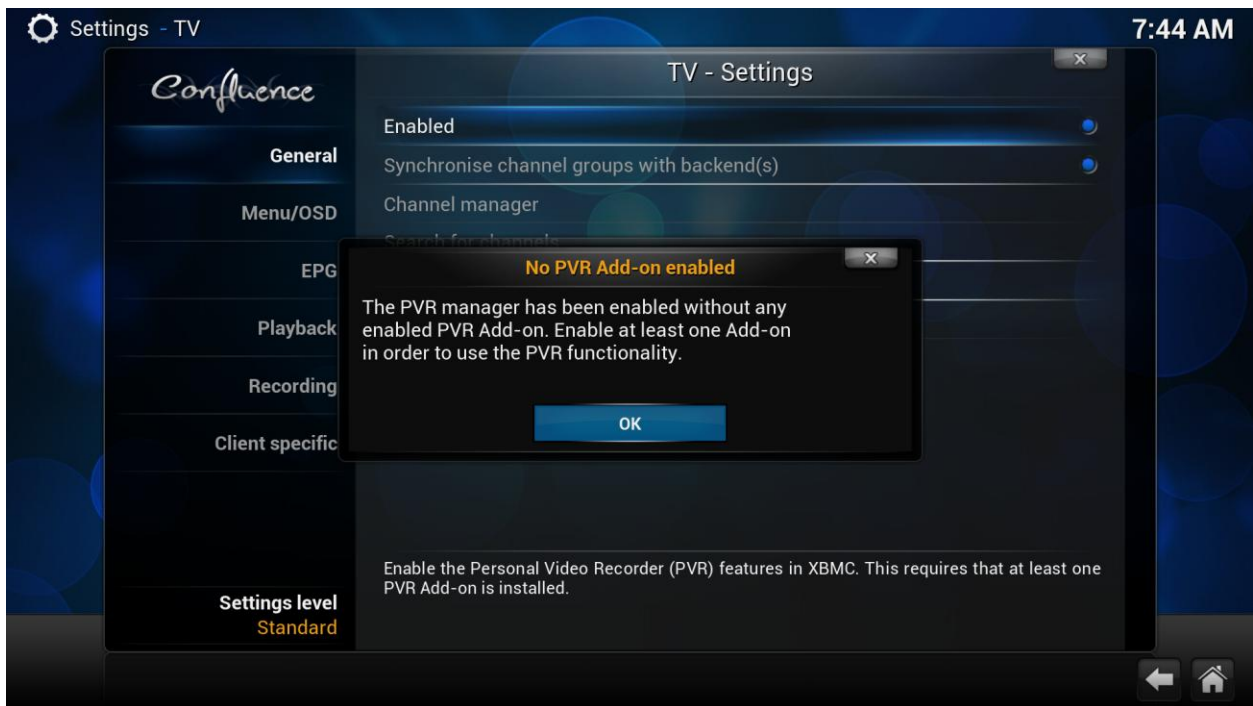
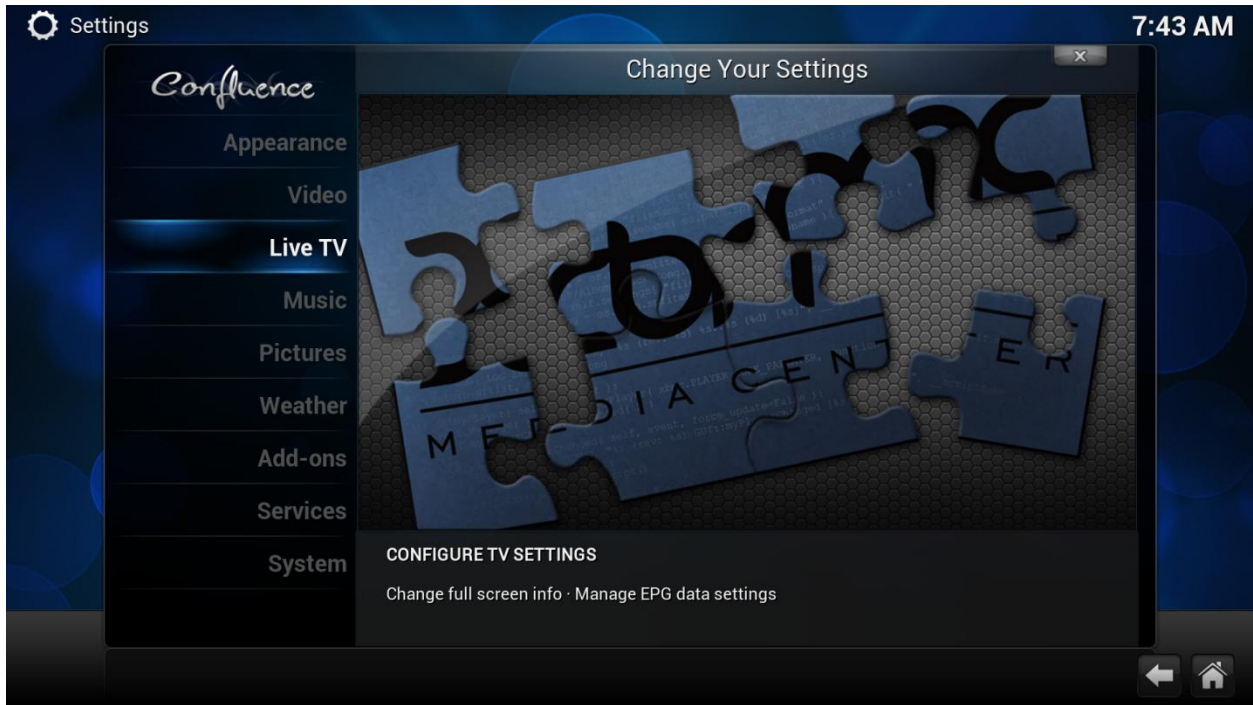
Looks familiar? Yes, because we will see the XBMC UI, only with a TBS logo added at the top left corner.

Firstly, we need to activate **Live TV** function by following the steps:

Settings --> Live TV --> General -->TV settings --> enable --> OK

We need to do this because this function in XBMC is deactivated by default.

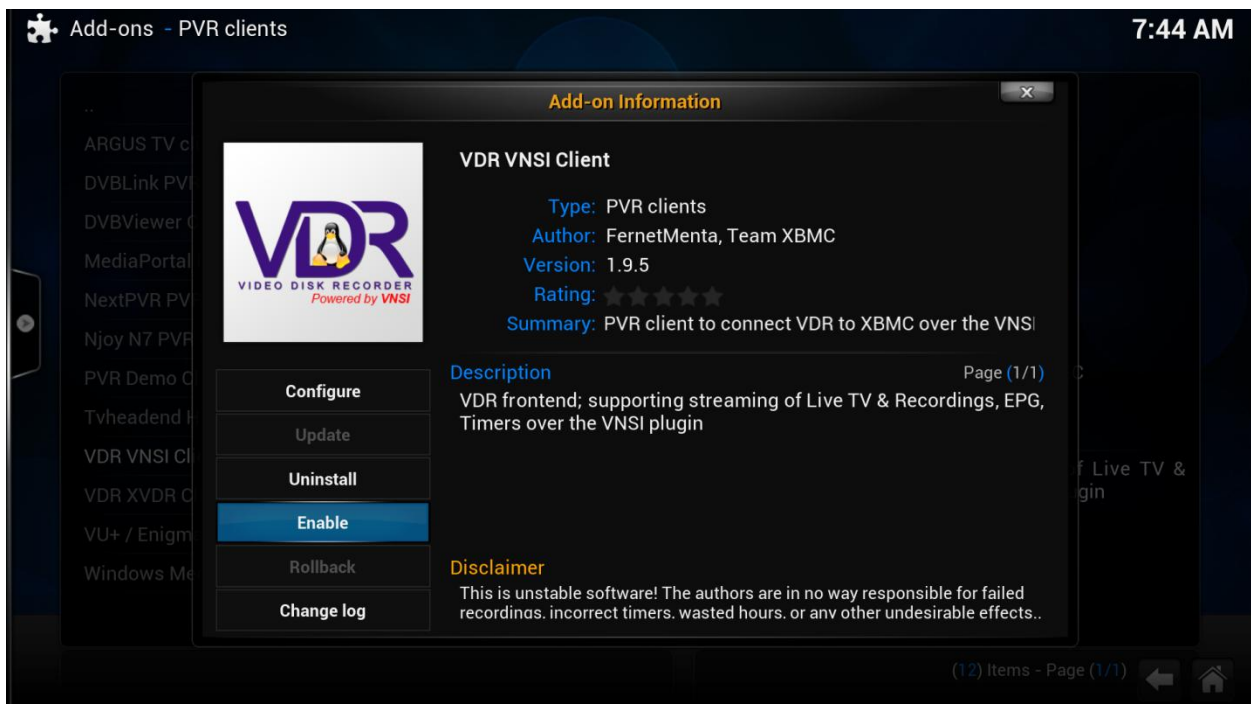
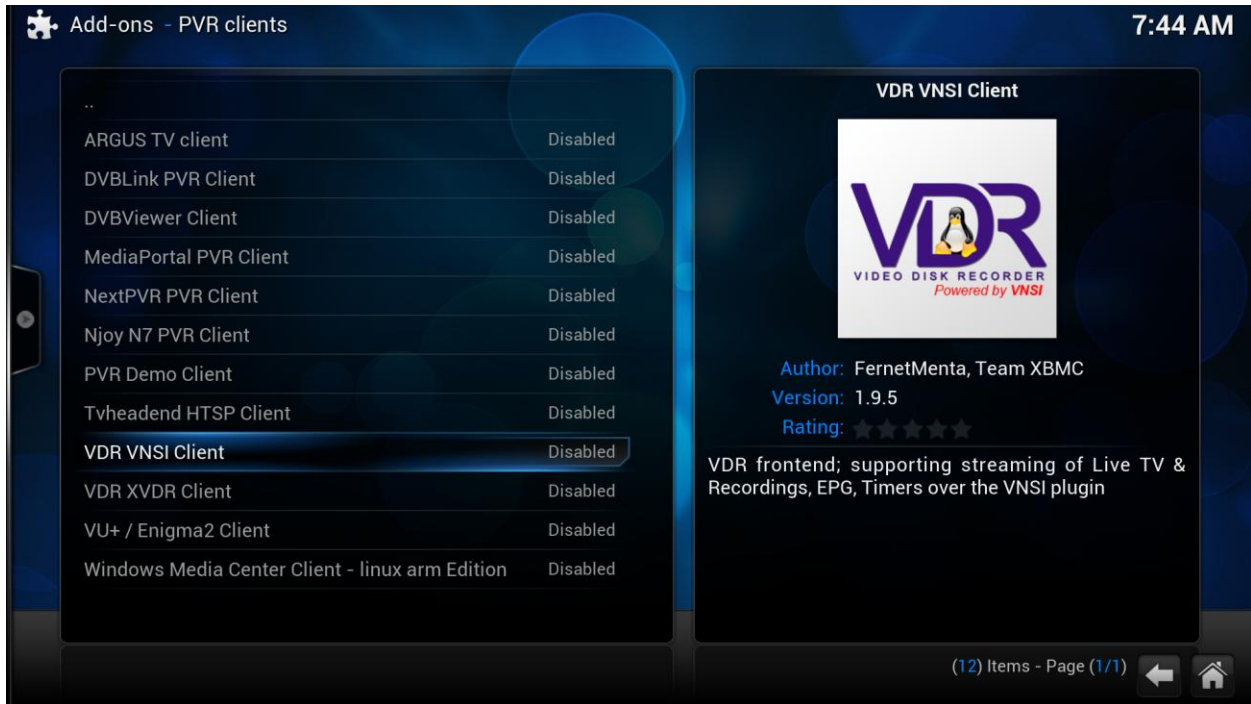




After Live TV function is activated, go back to "home", to do this we can just click the "house" button at the right bottom.

Then we should enable VDR is Add-ons, on the **Settings** list, click:

Add-ons --> PVR clients --> VDR VNSI Client --> Enable



Now we have enabled both Live TV function and VDR, it's ready for enjoying some Live TV, because the TV channels are received by the USB tuner, in order to do the playback, we need to use XBMC, that's why XBMC is combined in MatrixTV to make it an all-in-one system.

Go back to "home", click:

Live TV --> TV channels --> All TV channels

Now we can see a list of TV channels received by the USB tuner we are using, and we are free to click on the channel name to watch it or edit it, the same as we all we can do by using the normal XBMC version.

