

TBS2910 Matrix ARM mini PC



Matrix is a single board mini computer based on ARM with a wide range of interface, equipped with a powerful i.MX6 Freescale processor, it can run Android, Linux and other operating systems, a switch between different operating systems can be done within just a few minutes! Matrix also has great support for TBS USB tuners and popular software such as XBMC, VDR, Tvheadend, DVBLast and so on.

Features

TBS Tuner Support

Equipped with the mini PCIe slot and USB ports, Matrix works perfectly with TBS USB tuners.

Freescale Quad Core

Based on Freescale i.MX6, Matrix provides a much more powerful ready-to-run platform.

Open Source

It's 100% open source, Matrix runs Linux, Android, Ubuntu, and any other OS you like.

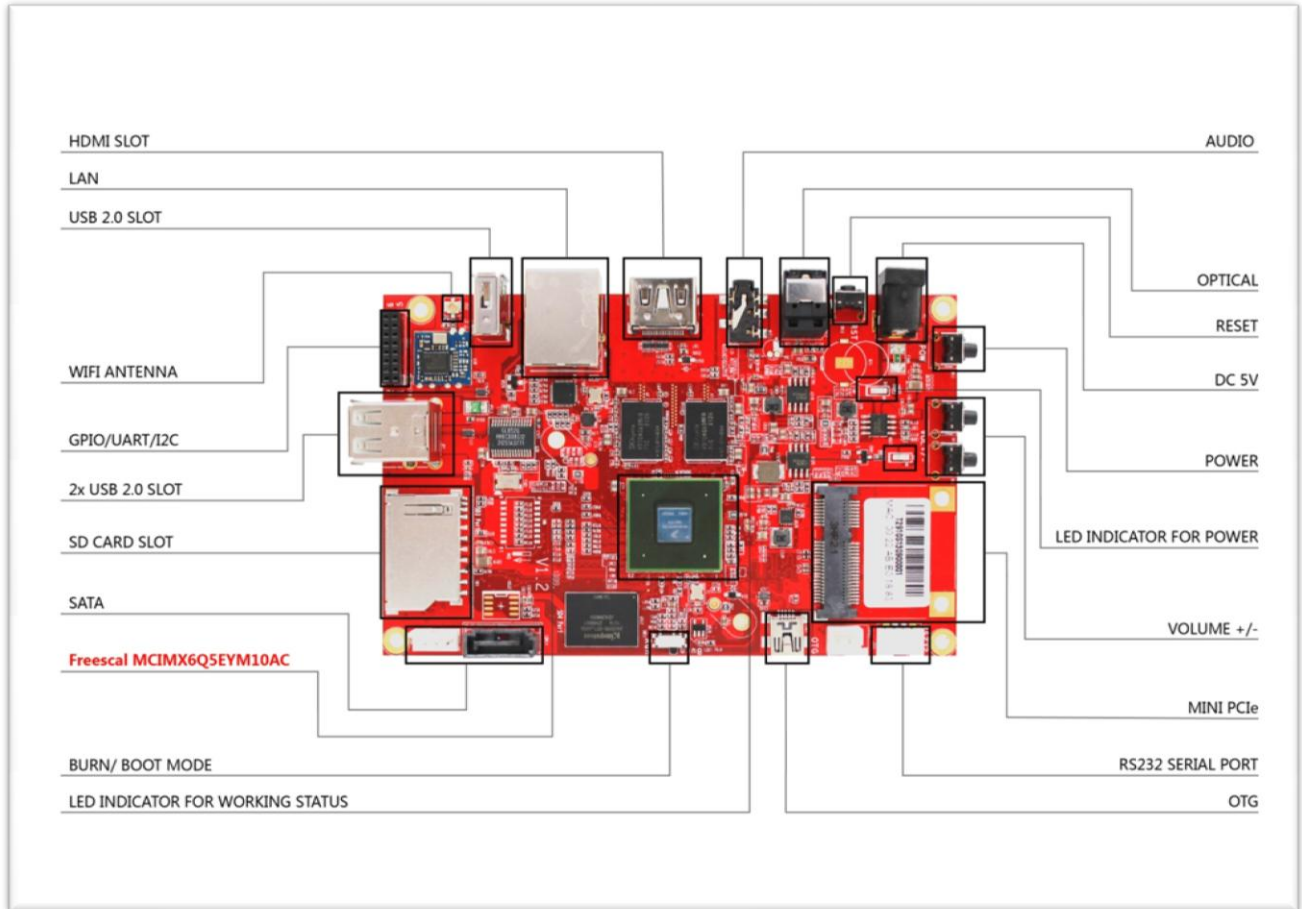
To switch from one OS to another, you only need to burn the new OS into the eMMC on the Matrix board, and then reboot it.

XBMC, VDR, Tvheadend Support

Popular software like XBMC, VDR, Tvheadend are ready for Matrix.

Specification:

System-on-a-chip (SoC)	Freescal MCIMX6Q5EYM10AC
CPU	Quad ARM Cortex-A9 at 1.0GHz
GPU	Vivante GC2000, Quad core GPU, Quad IPU
RAM	2GB DDR
USB 2.0 ports	3x USB 2.0
Audio & Video interface	HDMI port
	3.5 mm jack
Storage	eMMC
	1x SD card slot
	1x TF card slot
Network	10/100/1000 wired Ethernet
	WIFI IEEE 802.11n/b/g
Power input	5 V, 3A
Size	board:130*83 mm
	case:
Package contents	1x Matrix ARM mini PC
	1x power adapter
	1x SATA power cable
	1x RS232 adapter board (optional)



HDMI SLOT:

For connection to a digital TV or display with HDMI input.

LAN:

For connection with network cable.

USB 2.0 SLOT:

For connection with keyboard, mouse or other USB device.

WIFI ANTENNA:

For WIFI signal reception.

GPIO/UART/I2C:

For connection with peripheral device.

SD CARD SLOT:

For SD card insertion.

SATA:

For connection with hard disk.

Main Chip:

Freesal MCIMX6Q5EYM10AC

BURN/ BOOT MODE:

A switcher for the two modes:

a- BURN: move the switcher to this side, you can burn the OS into the eMMC.

b- RUN: move the switcher to this side, you can run Matrix with the OS in eMMC.

LED INDICATOR FOR WORKING STATUS:

The Blue LED light is flashing when Matrix is working.

AUDIO:

For connection with standard stereo 3.5 mm audio cable.

RESET:

For bringing Matrix back to the initial state.

DC 5V:

For connection with a power supply of 5V, 3A.

POWER:

LED INDICATOR FOR POWER.

VOLUME +/-:

Buttons for volume control.

MINI PCIe:

Mini PCIe slot for connection with mini PCIe device.

RS232 SERIAL PORT:

For connection with RS232 serial cable.

OTG:

An OTG cable should be connected to the OTG port, when you want to burn a new OS into the eMMC.