


How to Update MOI Pro

There' re two methods to update MOI Pro.

Method One: Through OTG usb cable

1. Download MOI Pro firmware:

Check this link: <http://www.tbsdtv.com/download/> to find "MOI Pro" , and then click  to download MOI Pro firmware:



2. Connect your computer with MOI Pro via an OTG usb cable:

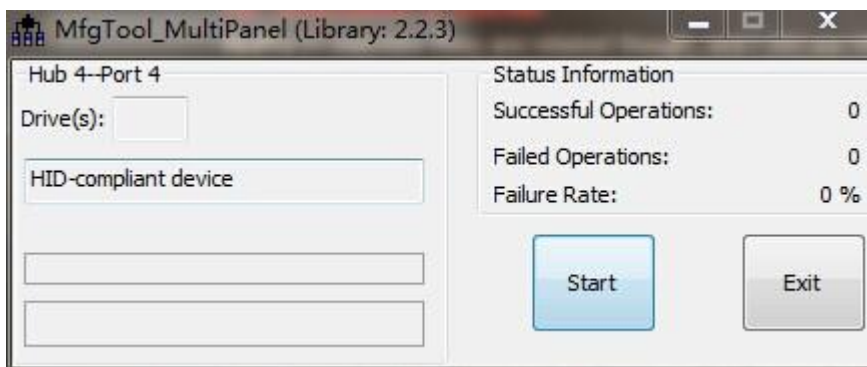


3. Press "BOOT/UPDATE" button **UP** to start upgrading.




4. Unpack the firmware file then run "MfgTool2.exe" , click "start" to burn the new firmware, after finished, power off MOI Pro, press down boot switch button, and then you can enjoy the new OS.

Utils	468.58 KB	207.47 KB
Profiles	239.82 MB	234.57 MB
Document	1.58 MB	1.40 MB
UICfg.ini	1 KB	1 KB
ReadMe.txt	1 KB	1 KB
MfgToolLib.dll	568.50 KB	243.60 KB
MfgTool2.exe	1.65 MB	795.61 KB
MfgTool.log	7.35 KB	1.51 KB
i.MX 6 DQ Profiles Included readme.txt	1.04 KB	1 KB
cfg.ini	1 KB	1 KB



Method Two: Through usb flash disk (Do not need to press the Boot/Update button UP)

1. Plug in usb flash disk to your computer, please must use **FAT16/32** format usb flash driver
2. Check this link: <http://www.tbsdtv.com/download/> to find "MOI Pro" , and then click  to download "MOIPro_AutoUpdate-V1.0.0.2" to root directory of your usb flash disk. Unpack the zip file, you will see below:

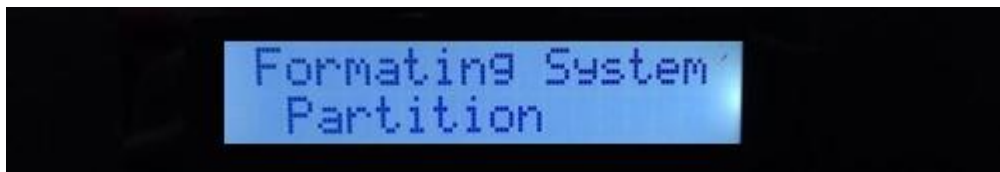
uramdisk.img	11.30 MB	11.22 MB
rootfs-m.tar.bz2	165.30 MB	163.35 MB
uImage-m	5.22 MB	5.19 MB
uImage_dvbt-m	5.22 MB	5.19 MB
uImage_dvbc-m	5.21 MB	5.20 MB
uImage	3 MB	2.98 MB
u-boot-m.imx	369.76 KB	152.72 KB
Readme.txt	1 KB	1 KB

Tips:

- rootfs-m.tar.bz2: system file for upgrading
- uImage-m: kernel for upgrading
- u-boot-m.imx: u-boot for upgrading
- If you' re dvb-t customers, please rename "uImage_dvbt-m" to uImage -m"
- If you' re dvb-c customers, please rename "uImage_dvbc-m" to uImage -m"

3. Pull out your usb disk from computer, **Make sure that your MOI Pro is powered off**, then connect the USB flash drive to it, When power on MOI Pro, you can see upgrade processes on the LCD of MOI Pro:

Making Partitions->Formating System Partition->Update Date->Sending and Writing System->Progress: 0-100 %-> Finishing System Write->Down



...

When the screen displays " Done" , the upgrade processes are completed:



4. At last, pull out your usb disk, turn off your MOI Pro, and then restart it. A new system is waiting for you.