

# **User Manual**

**For**

**TBS 5980 USB  
DVB-S2 TV QBOX CI**

**V1.0**

# Contents

## Chapter 1. Introduction

1.1 Overview.....	1
1.2 Features.....	1
1.3 Device Specification.....	1
1.4 Hardware & Software Requirement.....	2

## Chapter 2. Installation

2.1 Hardware Installation.....	2
2.2 Software Installation.....	4

## Chapter 3. How to use TBSViewer

3.1. Install TBSviewer.....	7
3.2 Scan Channels.....	9
3.3 Watch Satellite TV .....	10
3.4 How to check CAM information.....	11

## Chapter 4. How to Use DVBDream

4.1 Install DVBDream.....	12
4.2 How to use DVBDream.....	13
4.3 How to check CAM information.....	16

## **1. Introduction**

### **1.1. Overview**

TBS 5980 USB DVB-S2 TV Q-Box CI is one of our latest products for watching and recording digital satellite TV on PC. TBS 5980 can be used for one way internet via satellite or satellite data download. It is equipped with a CAM (Conditional Access Module) slot in one end of the box for plug-in CAM, which ensures you to connect a CAM with a compatible Pay-TV Smartcard subscription to enjoy Pay-TV channels.

Driver and DVB software should be installed before using. It's compliant with Windows 2000/XP/Vista/7 and Linux.

### **1.2. Features**

- 1.DVB-S2/S Transponders receiving
- 2.CI Support
- 3.Broadband Internet via Satellite\*
- 4.High-speed Data download via Satellite\*
5. Windows 7 Media Center compatible
- 6.Supported by DVBDream, TBSViewer

### **1.3. Device Specification**

- 1.Receiving Frequency: 925~2175 MHz Tuning Range
- 2.Input level: -69~ -23dBm
- 3.DVB-S2/DVB-S DIRECTV 8PSK QPSK Demodulator
4. 8PSK /QPSK/ mode
5. Symbol Rates:
  - DVB-S2 QPSK: 1 - 45 Msps
  - DVB-S2 8PSK/QPSK: 1 - 45 Msps
6. Code Rates:
  - DVB-S2 QPSK: 1/4,1/3,2/5,1/2,3/5,2/3,3/4,4/5,5/6,8/9,8/10

DVB-S2 8PSK: 3/5,2/3,3/4,5/6,8/9,9/10

7. Automatic Acquisition Range:  $\pm 10$ MHz

8. DiSEqC 2.x compliant

9. Single CI design

10. USB2.0 interface

\* Depends on service providers

## **1.4. Hardware & Software Requirement**

To use TBS digital satellite TV tuner card/box, you must have satellite **dish, LNB, cable** and other necessary accessories. You must have one computer with the following configurations:

Windows 2000/XP/Vista/7 or Linux

DirectX9.0 or later Version

Available USB2.0 Port

CD-Rom (Driver and Software Installation)

CAM and smartcards for Pay TV viewing (Such as Irdeto, conax, viaccess, and so on)

### **For DVB-S**

1GHz Pentium III CPU or Above

256MB RAM or Above

Graphic Card with at Least 16MB RAM

### **For DVB-S2 HDTV**

Dualcore CPU

1GB RAM or Above

Graphic Card with at Least 64MB RAM

## **2. Installation**

### **2.1 Hardware Installation**

For installing 5980 USB DVB-S2 TV Q-Box CI, set your satellite dish aiming at the right satellite. Connect dish LNB to Q-Box “**RF IN**” with cable. Plug the power supply and connect it to Q-Box “**DC7.5V**”. Then hook up your PC to the TBS 5980 with an USB cord in “**USB2.0**” port as shown on the picture below.



To activate the CI support function, you also need to insert a CAM into the device. After the CAM is loaded with a smartcard properly, you should insert the CAM into the device.

### **Procedures:**

**Step1:** Insert the smartcard into the CAM. The smartcard should be inserted with the embedded chip side above into the CAM, so that the chip will face towards the side of the CAM with a bump.



**Step2:** Loading QBOX CI with the CAM. The bumped side of the CAM and the brand-marked side of the QBOX should face the same direction. The CAM should be inserted in right way as follows so that it can work properly.



## 2.2 Software Installation

Before the installation, please make sure your computer qualifies the system requirements.

### Install TBS 5980 DVB-S2 TV QBOX CI Driver

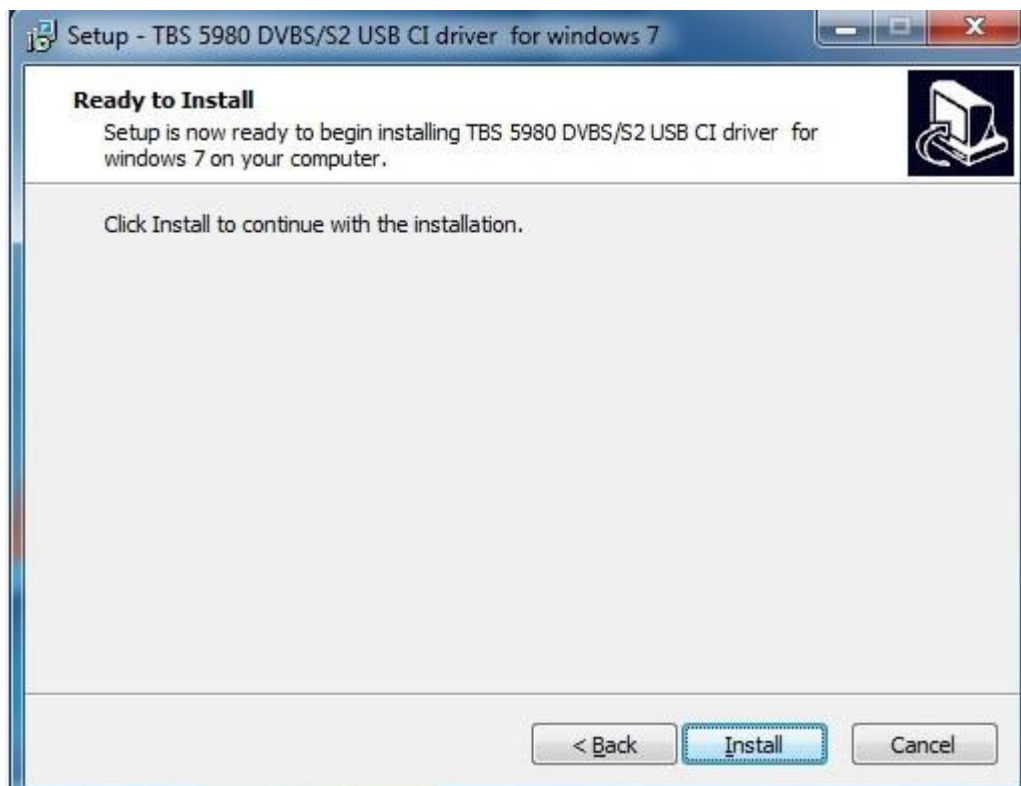
**Step 1:** Insert the Installation CD into your CD-ROM. Click “**Install Driver**” while auto-run appears.



**Step 2:** A setup window will pop up. Click “Next” to continue.



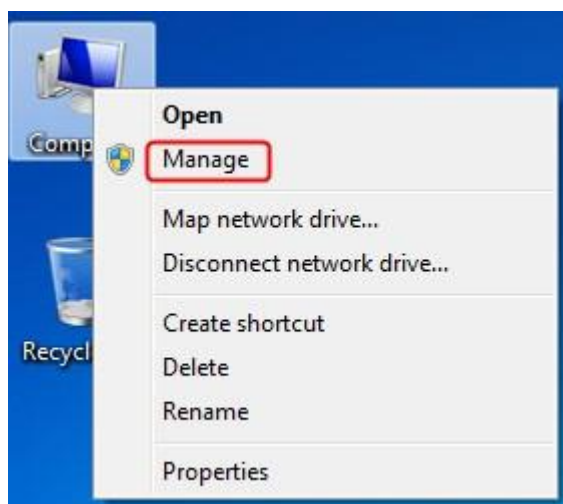
**Step 3:** Then click “Install”.



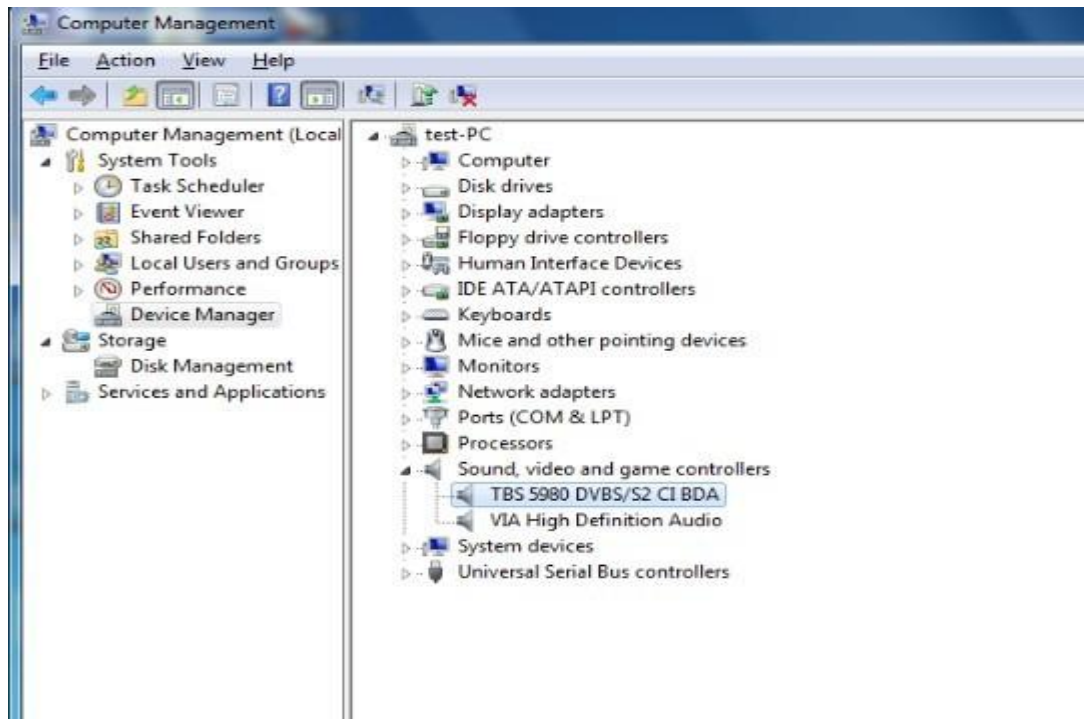
**Step 4:** Click **“Finish”** and the installation is completed.



To verify if the driver has been correctly installed, you could right click **“Computer”** and choose **“Manage”**.



Click on **“Device Manager”** on the left hand side, and click **“Sound, video and game controllers”** on the right. If you can see **“TBS 5980 DVBS/S2 CI BDA”**, that means you do have installed driver correctly.



### 3. How to use TBSviewer

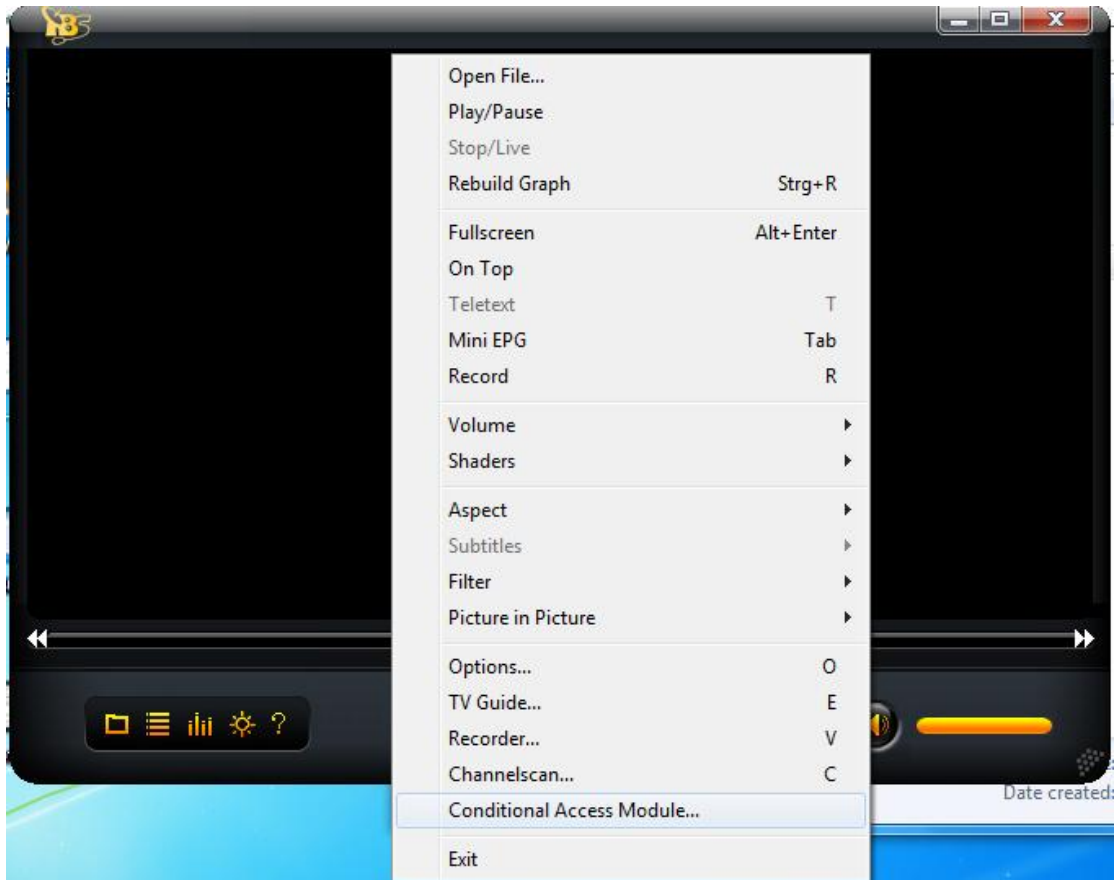
#### 3.1. Install TBSviewer

Click “**Install TBSviewer**” from CD auto-run to start installation, click “**Next**” until installation is completed.

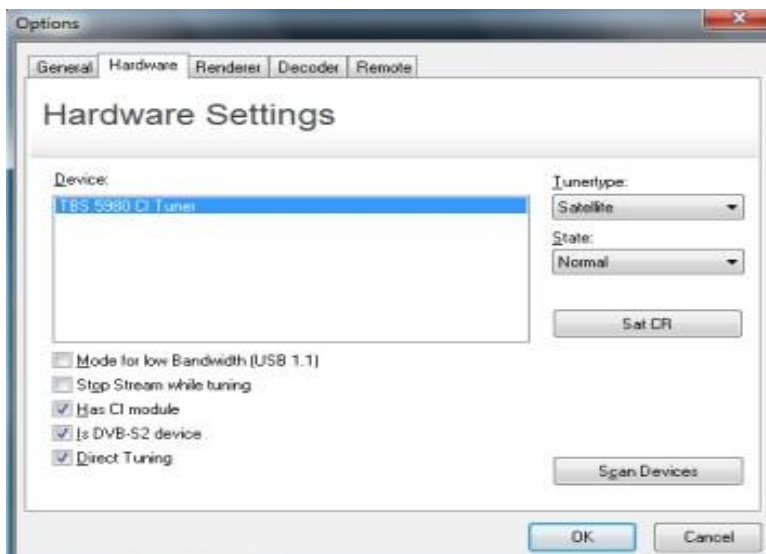




Double click the icon **TBSViewer** to launch TBSviewer, and then right-click to choose the **“Options”** item.

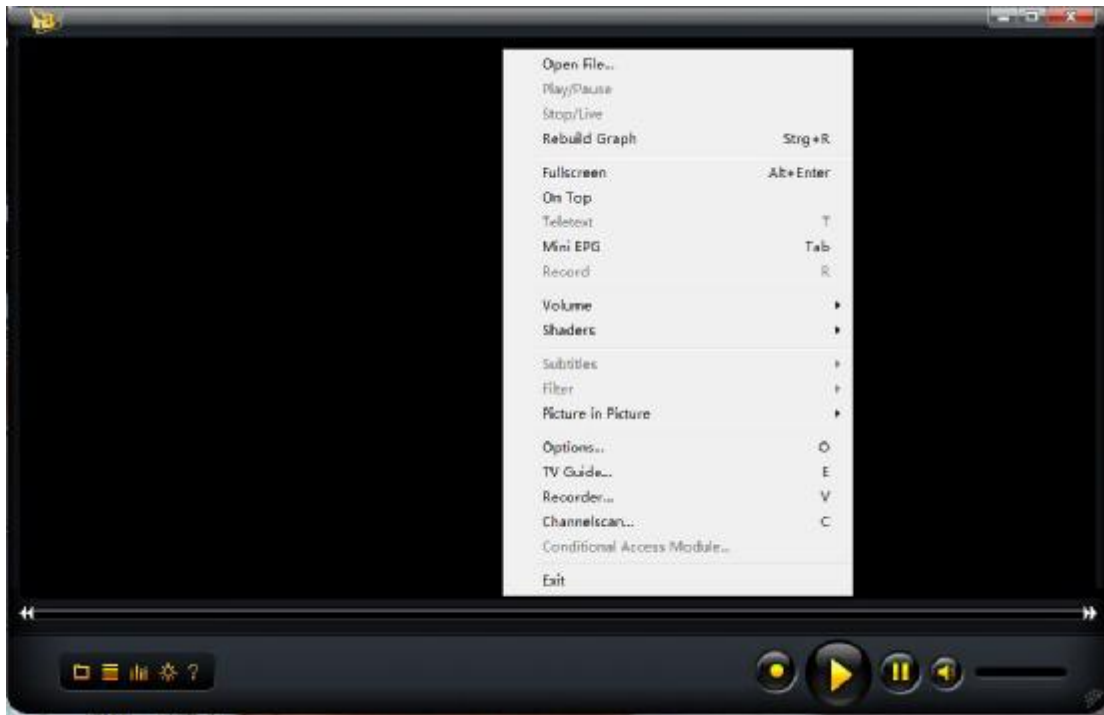


If TBS product device is well installed in the computer, you can see **“TBS 5980 DVB-S2 QBOX CI”** on a window as follows.



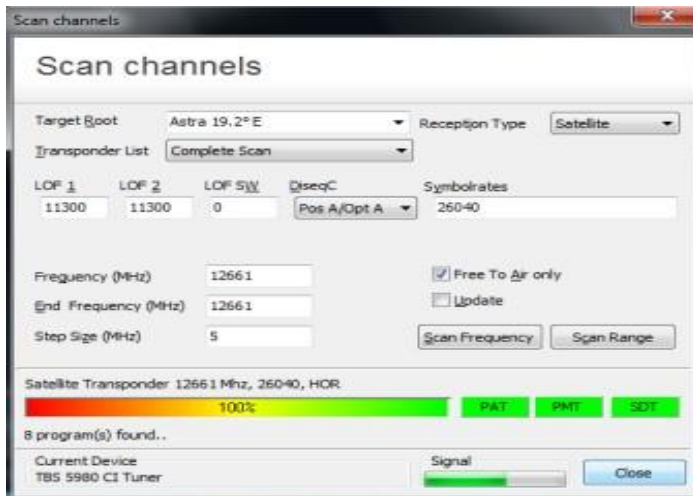
### 3.2. Scan Channels

Run TBSViewer and right click to choose the “**Channel scan**”.



The windows of “**Scan channels**” will pop up. You can select existing satellite transponders list from the scroll down menu. Then set up the DiseqC, LNB LOF1, LOF2 and LOF SW, input transponder Frequency range here and start scan by frequency or by range.

If you don't use any DiseqC, just choose “**None**”. And if you do use DiseqC, please choose the correct DiseqC type.



After “**Scan channels**” is completed, the found program numbers will be shown and the program list will be automatically saved. You can close the “**Scan channels**” window.

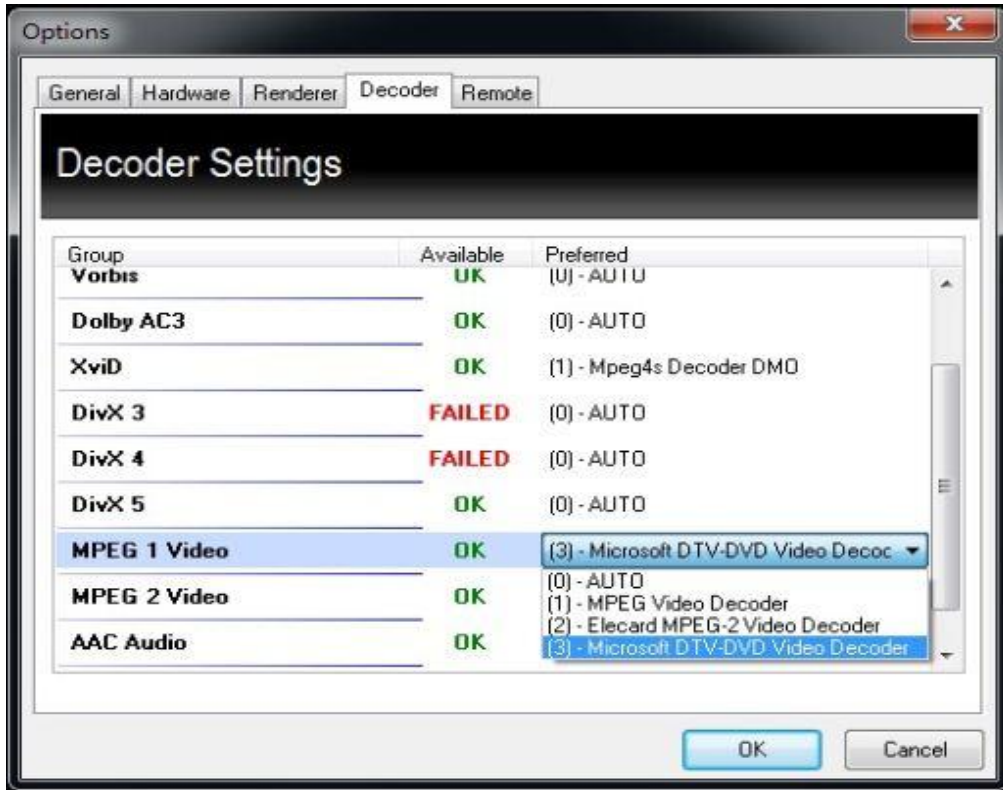
### 3.3. Watch Satellite TV

Move the mouse to the right hand side of the TBSViewer main window, and a channel list window will appear. You can double click a channel to enjoy.



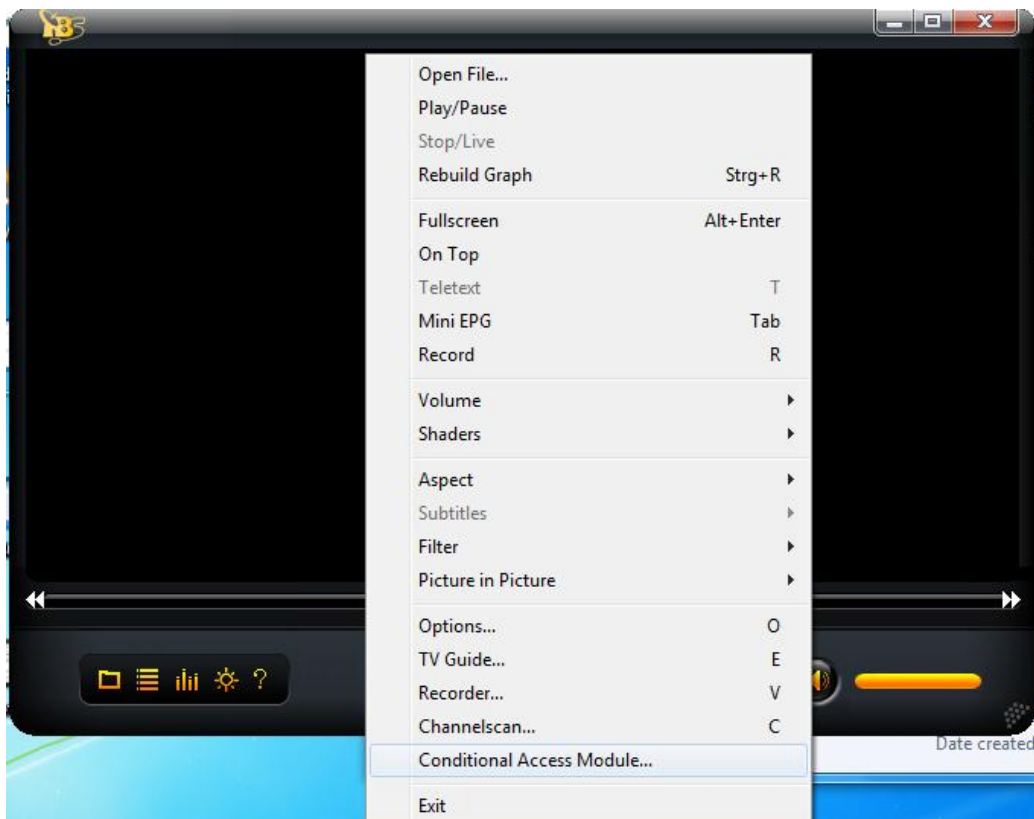
TBSviewer allows links to different Video/Audio codecs. To change Video/Audio codec, right click to pop up menu window and click the “**Options**”, enter the “**Decoder**” menu. Double click related options to select different codecs.

If your system is Windows 7, you can select “**Microsoft DTV-DVD Video Decoder**” which is bundled in the system.

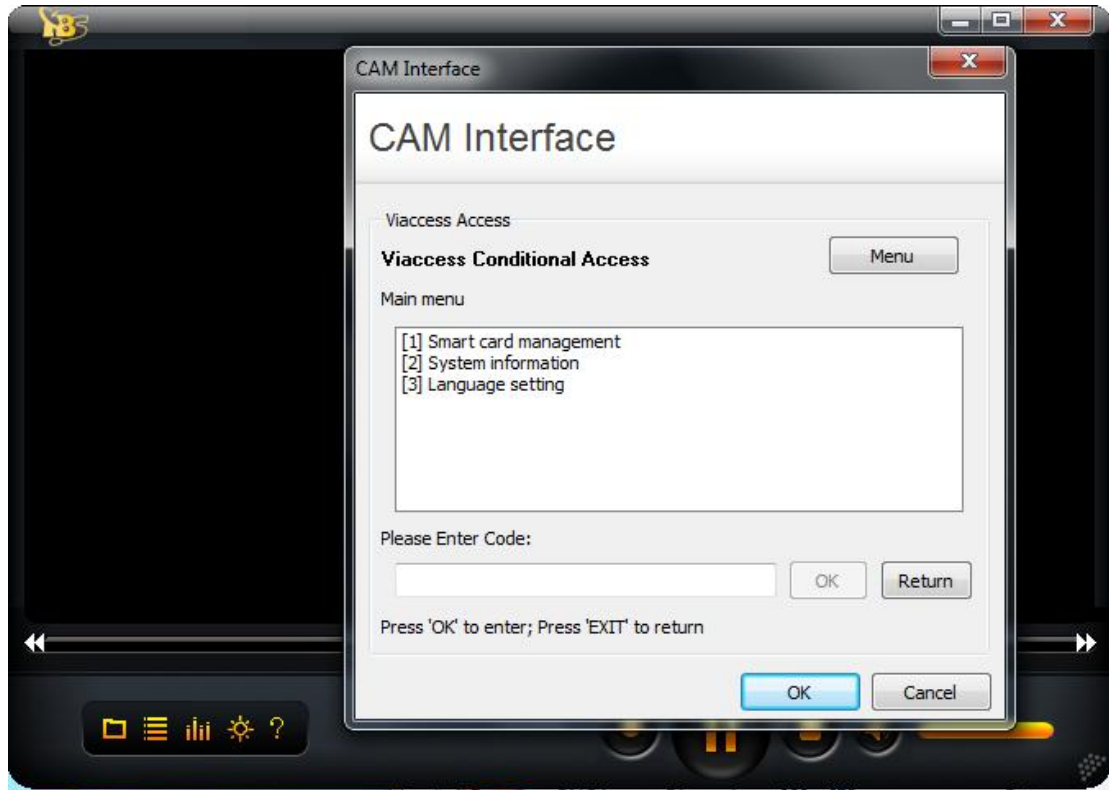


### 3.4. How to check CAM information

Right-click on TBSviewer and select “Conditional Access Module”.



Then the “CAM Interface” window will pop out for your service. You can check the CAM information as shown in the picture.



## 4.How to Use DVBDream

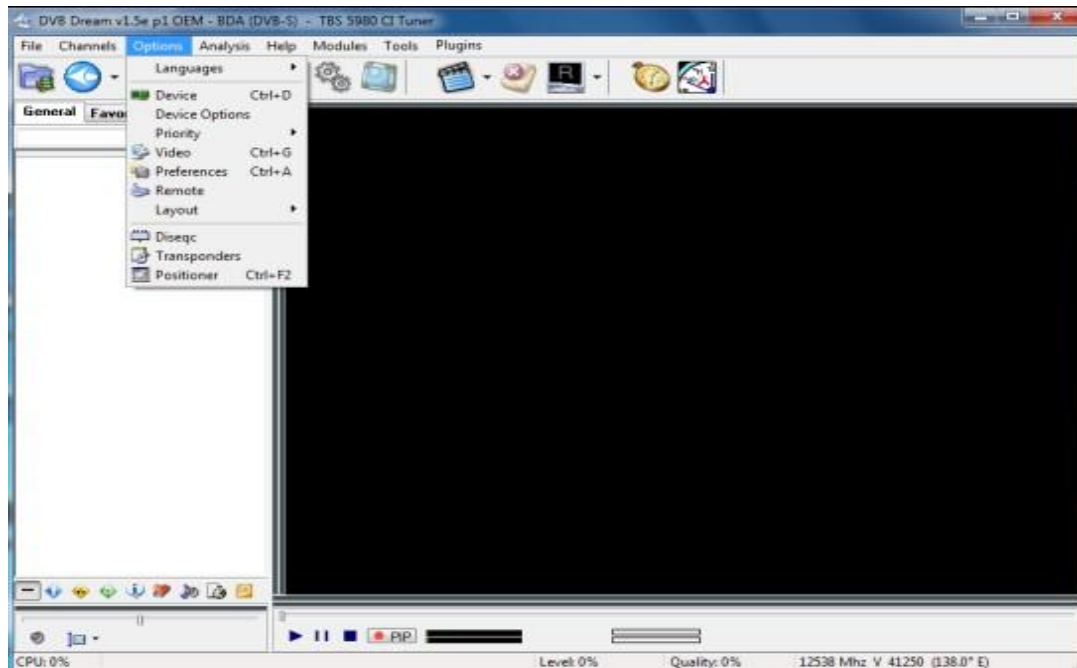
### 4.1. Install and use DVBDream

Click “**Install DVBDream**” to start installation, and then click “**Next**” until the installation is completed.



Run DVBDream, after TBS device product is installed in the computer.

Click **“Device”** under **“Options”** menu, and you will see TBS model name on the dialog.

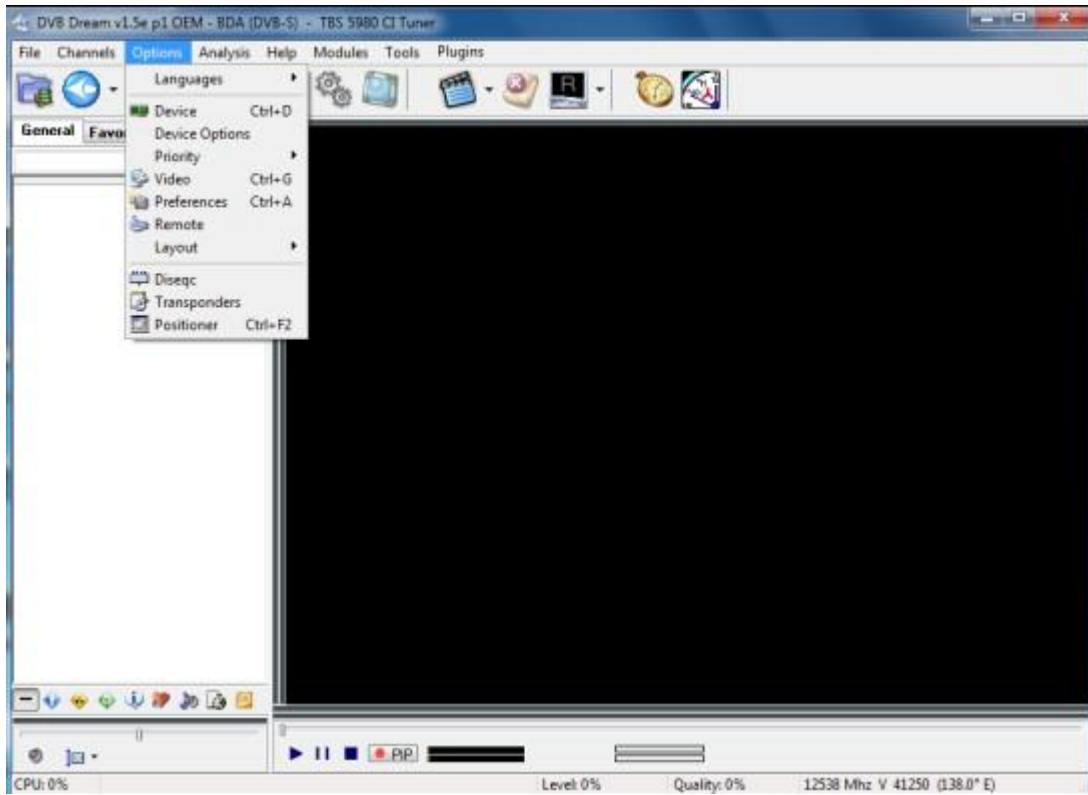


When DVB has identified TBS 5980 as shown in the window, you could use the software to watch pay TV programs.

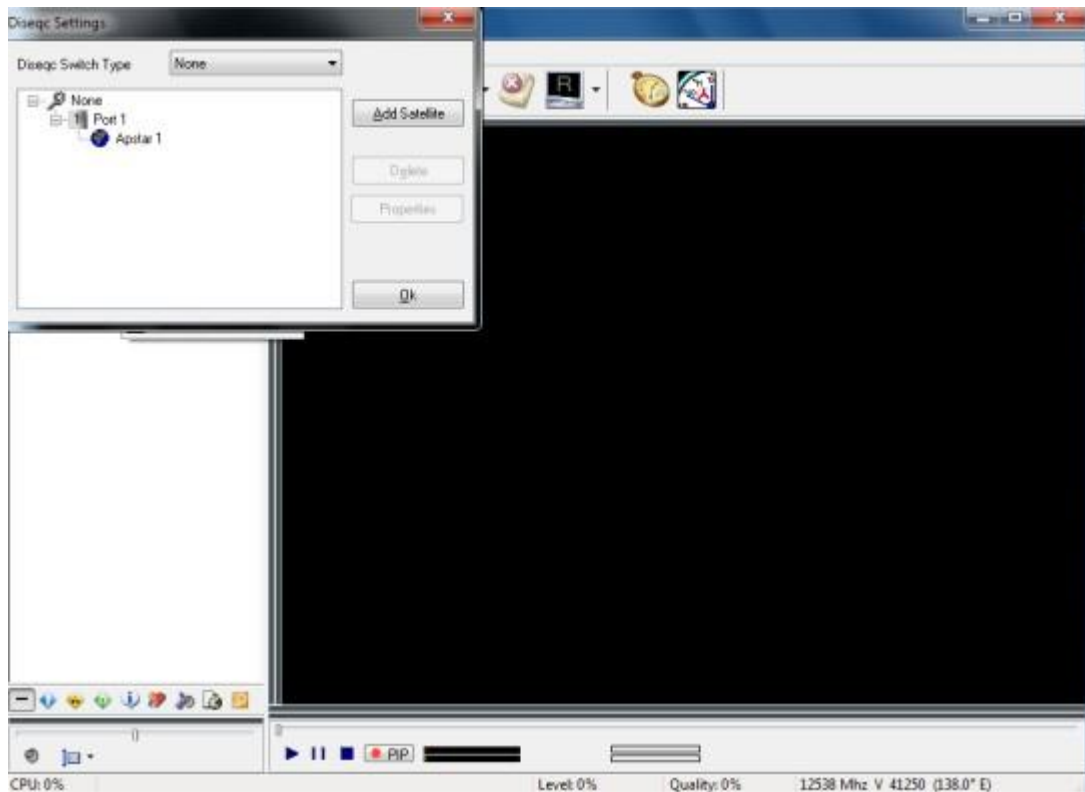


## 4.2. How to use DVBDream

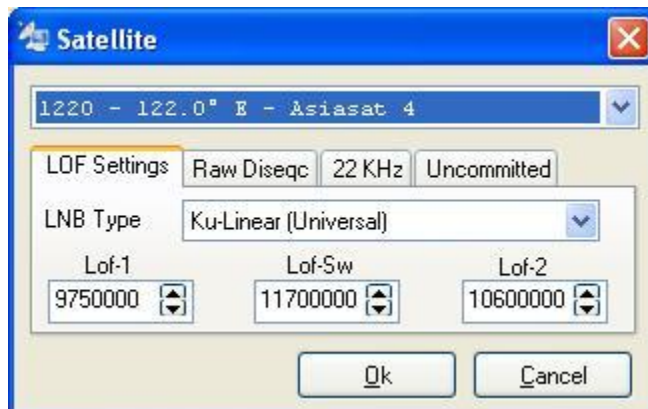
To set up satellite and DiSeqc switch, you could click on **“Diseqc”** under **“Options”** menu.



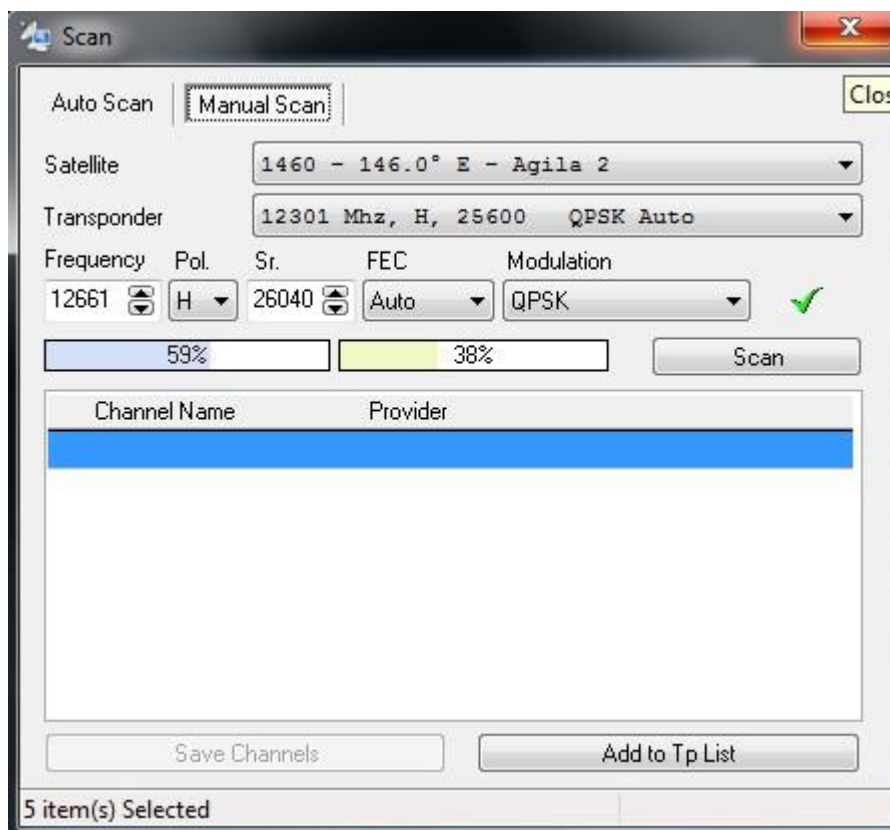
If you don't use any Diseqc, just choose **"None"**. But if you do, choose the correct Diseqc type port and click **"Add Satellite"**.



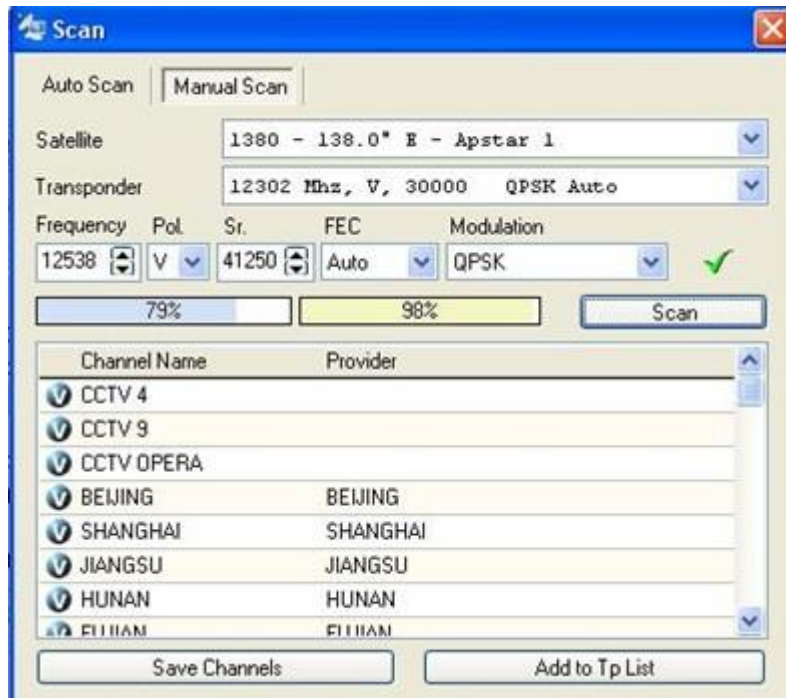
Choose the correct satellite from scroll down menu, and set up LOF and other parameters.



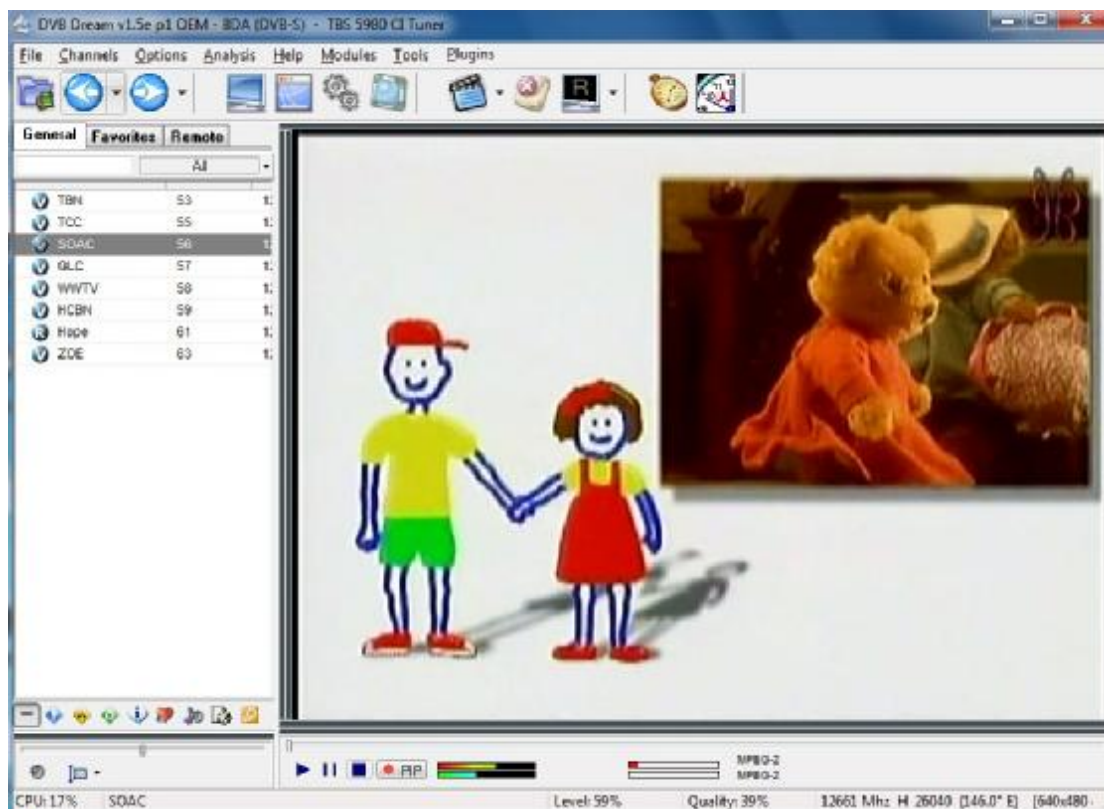
After you have completed Diseqc and LNB settings, you then could click “Scan” or “Manual Scan” under “Channels” menu to search for channels.



After scanning, the available channels in this Transponder or Satellite will pop up, then so you can click “Save Channels” to save all of them.

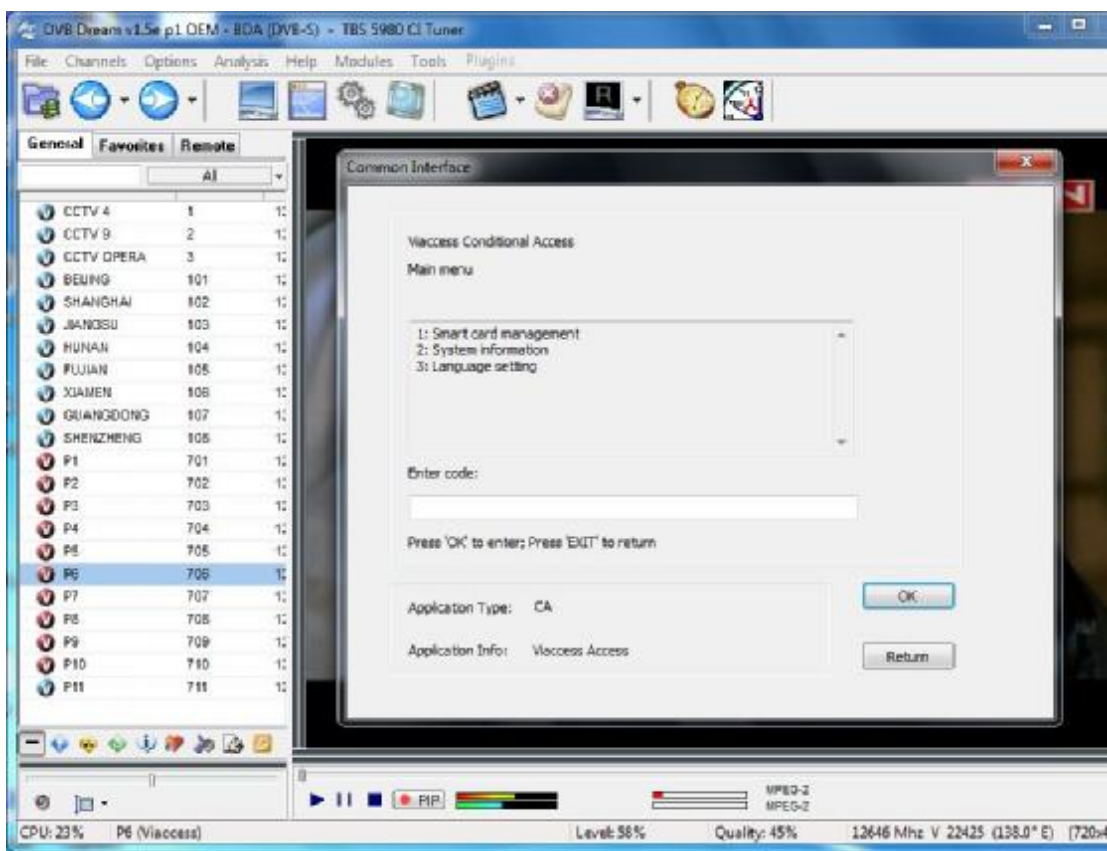
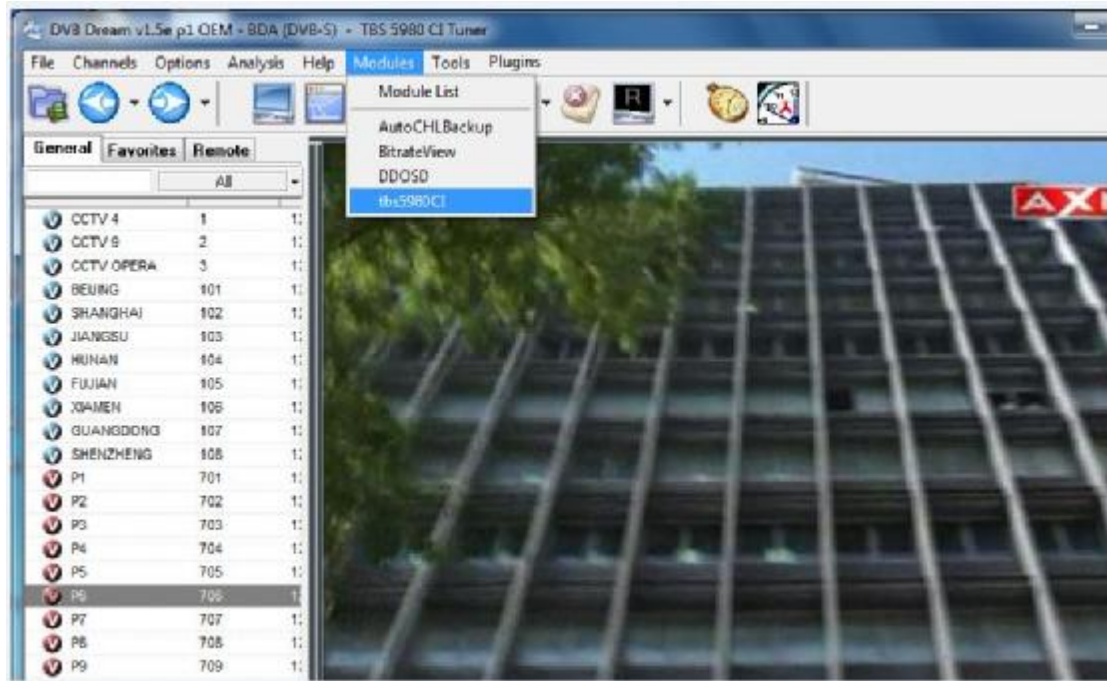


Click whichever you want in the channel list to watch the TV shows.



### 4.3. How to check CAM information

Click “tbs5980CI” under “Modules” on the menu list, and then the “Common Interface” window will pop out at your service. See the pictures below.



**Note:** While firstly launching the smartcard in CAM to watch pay-TV programs, it will take a few seconds to initiate the smartcard. However, you will be able to switch the channels without any pause afterwards.