

# User Guide

V1.1

**For**

**TBS6220 PCI-E DVB-T/T2 TV Card**

**TBS6280 PCI-E DVB-T/T2 Dual Tuner TV Card**

**TBS6284 PCI-E DVB-T/T2 Quad Tuner TV Card**

# Contents

## Chapter 1. Introduction

1.1 Overview.....	1
1.2 Features.....	1
1.3 Device Specifications.....	1
1.4 System Requirements.....	2

## Chapter 2. Installation

2.1 Hardware Installation.....	3
2.2 Software Installation.....	3

## Chapter 3. Watch TV with TBSViewer

3.1. Install TBSViewer.....	6
3.2 Scan Channels.....	8
3.3 Watch and Record TV .....	9

## Chapter 4. Watch TV with DVBDream

4.1 Install and use DVBDream.....	11
-----------------------------------	----

## Chapter 5. Watch TV with Windows 7 Media Center .....

Appendix. UK Freeview Transmitters Map.....	23
---	----

# **Chapter 1. Introduction**

---

## **1.1. Overview**

TBS6220 is a single tuner PCI-Express interface DVB-T2/T TV Tuner Card. TBS6280 is a dual tuner PCI-Express interface DVB-T2/T TV Tuner Card which supports watching or recording two different channels from two different frequencies simultaneously. TBS6284 is a quad tuner PCI-Express interface DVB-T2/T TV Tuner Card which supports watching or recording four different channels from four different multiplexes simultaneously. All of them are ready with windows BDA driver and Linux driver. The high sensitivity NIM tuner makes reception with weak signal possible. They are compatible with Windows7 Media Center and other player software like TBSViewer, DVBDream. It's ideal for watching UK Freeview SD and HD channels on your PC.

## **1.2. Features**

### **TBS6220 PCI-E DVB-T2 TV Tuner Card:**

1. Watch free-to-air Digital Terrestrial TV on PC
2. Both DVB-T2 and DVB-T are supported
3. Low Profile Size
4. High-Definition Video, Real-Time and Scheduled Video Recording
5. High Sensitivity DVB-T2 Tuner for The Best Digital TV Reception

### **TBS6280 PCI-E DVB-S2 Dual Tuner TV Card:**

1. Dual Channel Receiving simultaneously
2. Both DVB-T2 and DVB-T are supported
3. Low Profile Size
4. High-Definition Video, Real-Time and Scheduled Video Recording
5. High Sensitivity DVB-T2 Dual Tuner for The Best Digital TV Reception

### **TBS6284 PCI-E DVB-S2 Quad Tuner TV Card:**

1. Quad Channel Receiving Simultaneously
2. Both DVB-T2 and DVB-T Supported
3. High-Definition Video, Real-Time and Scheduled Video Recording
4. High Sensitivity DVB-T2 Tuner for The Best Digital TV Reception
5. Windows BDA Driver and Linux Driver Ready

### **1.3. Device Specifications**

1. Receiving Channel: VHF Band and UHF Band
2. Channel Bandwidth: 6, 7, 8 MHz
3. DVB-T2/ T Modulation Type: QPSK, 16QAM, 64QAM, 256QAM
4. FFT Mode: 1K, 2K, 4K, 8K, 16K, 32K
5. Code Rate: 1/2, 3/5, 2/3, 3/4, 4/5, 5/6, 7/8
6. Guard Interval: 1/4, 1/8, 1/16, 1/32, 1/64, 1/128, 19/128, 19/256
7. Intermediate Frequency  
IF mode: Low IF  
Center IF Frequency: 3 ~ 5 MHz  
Note: default 4MHz
8. RF-Input Impedance 75 $\Omega$  (IEC-DIN female)
9. RF-Output Impedance 75 $\Omega$  (IEC-DIN male)

### **1.4. System Requirements**

1. Windows XP / Vista/ 7, Linux
2. Pentium 4 2.0 GHz, Pentium M 1.3 GHz
3. For HDTV: 2.6 GHz multi core processor
4. Hard disk with min. 1 GB free capacity
5. Sound and graphics card with support for DirectX 9 or higher
6. One free PCI Express slot
7. CD/DVD drive for software installation

## **Chapter 2. Installation**

---

### **2.1 Hardware Installation**

For installing TBS 6280/6220/6284 DVB-T/T2 TV Card, insert the card into computer PCI-Express, then connect rooftop or mini aerial to card “**RF IN**” port.

Note: An indoor antenna is provided to watch Freeview in the areas where the signal is strong. Change of orientation of the antenna or using amplified antenna may improve reception. Standard or special aerial from the roof should help to achieve the best reception quality.

### **2.2 Software Installation**

Before you begin, make sure your computer qualify the system requirements.

Insert the Installation CD into your CD/DVD-ROM. Click “Install Driver” while auto-run appears.



A setup window will pop up. Click "**Next** " to continue.



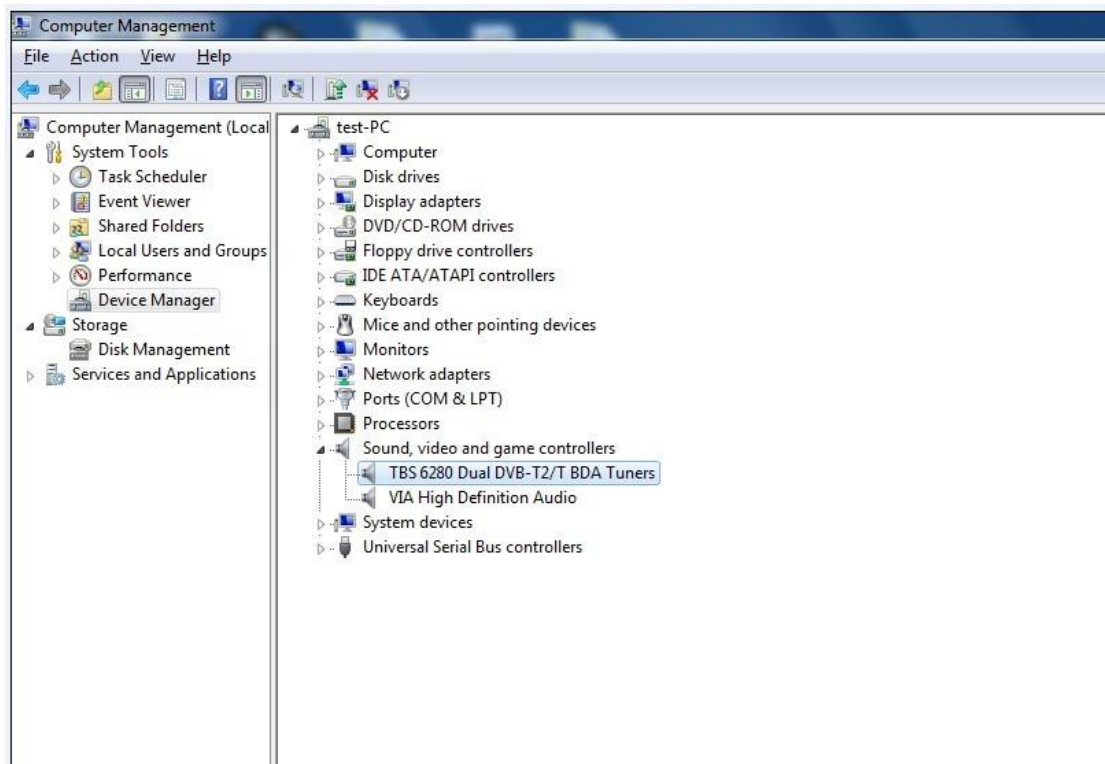
Then click "**Install**".



After that, click "**Finish**" and the installation is completed.



To verify if driver was correctly installed, you could check computer device manager. You will see **“TBS 6280 DVB-T2/T BDA Tuners”** under the **“Sound, video and game controllers”** bar of **“Device Manager”** if the driver is correctly installed.



You may also install TBSViewer or DVBDream for TV reception.

## Chapter 3. Watch TV with TBSViewer

---

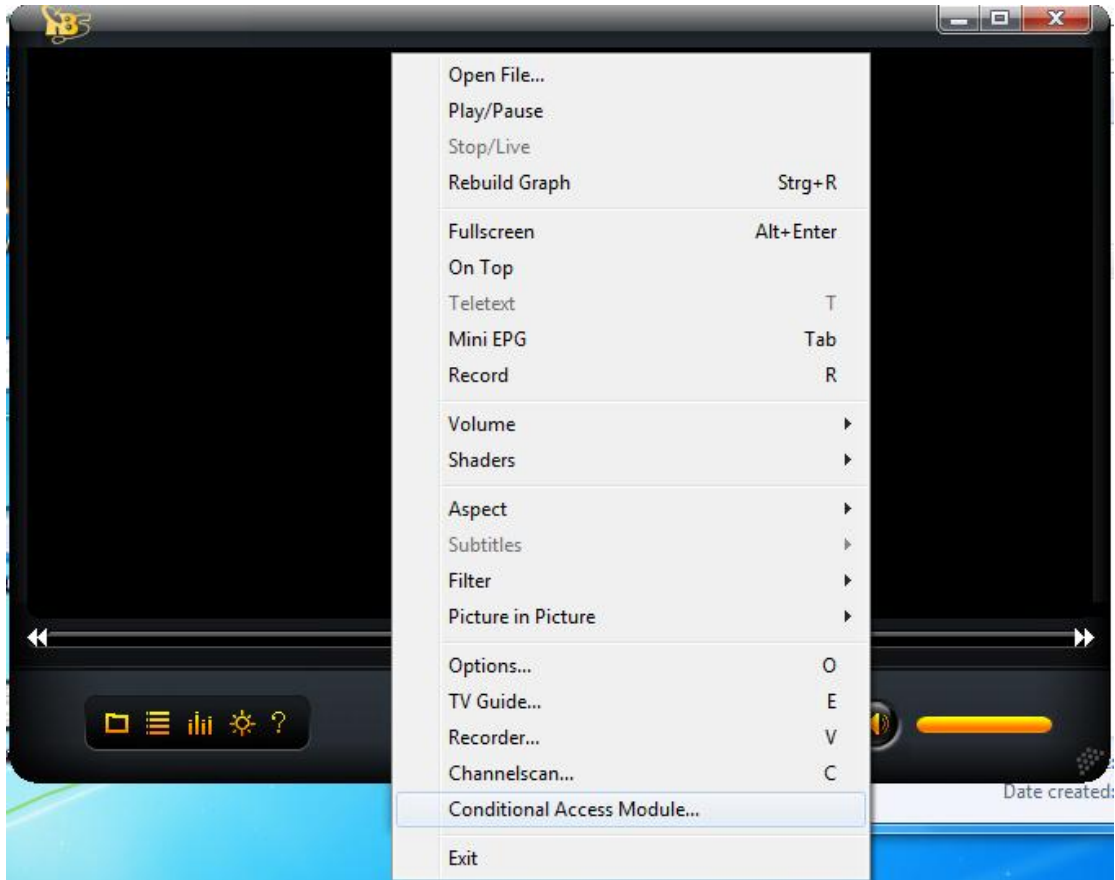
### 3.1. Install TBSViewer

Click “**Install TBSViewer**” from CD auto-run to start installation, click “**Next**” until installation is completed.

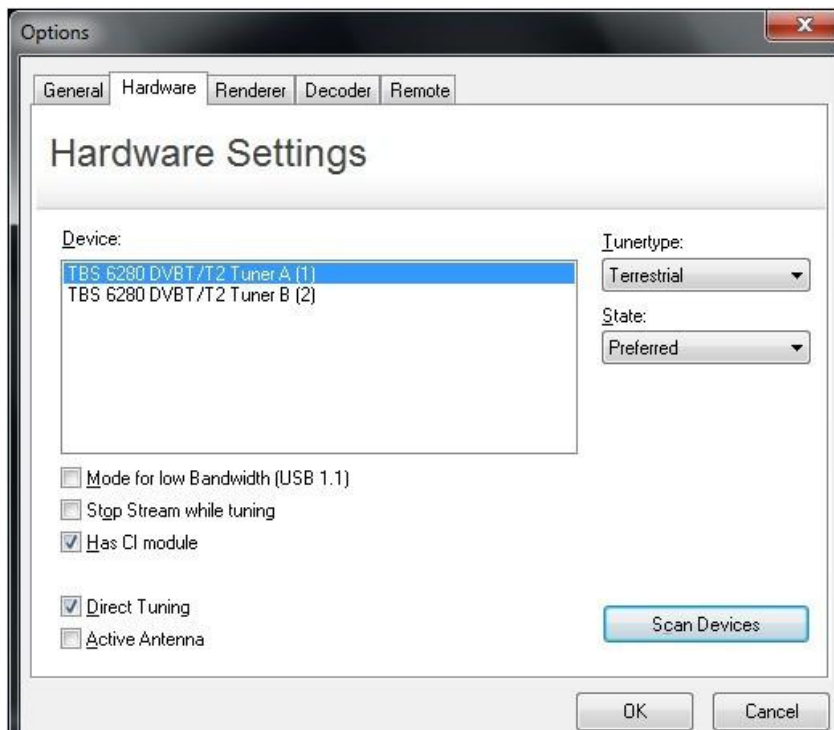


Double click the icon  to launch TBSViewer, right-click on the application window to pop up menu and click the “**Options**” .





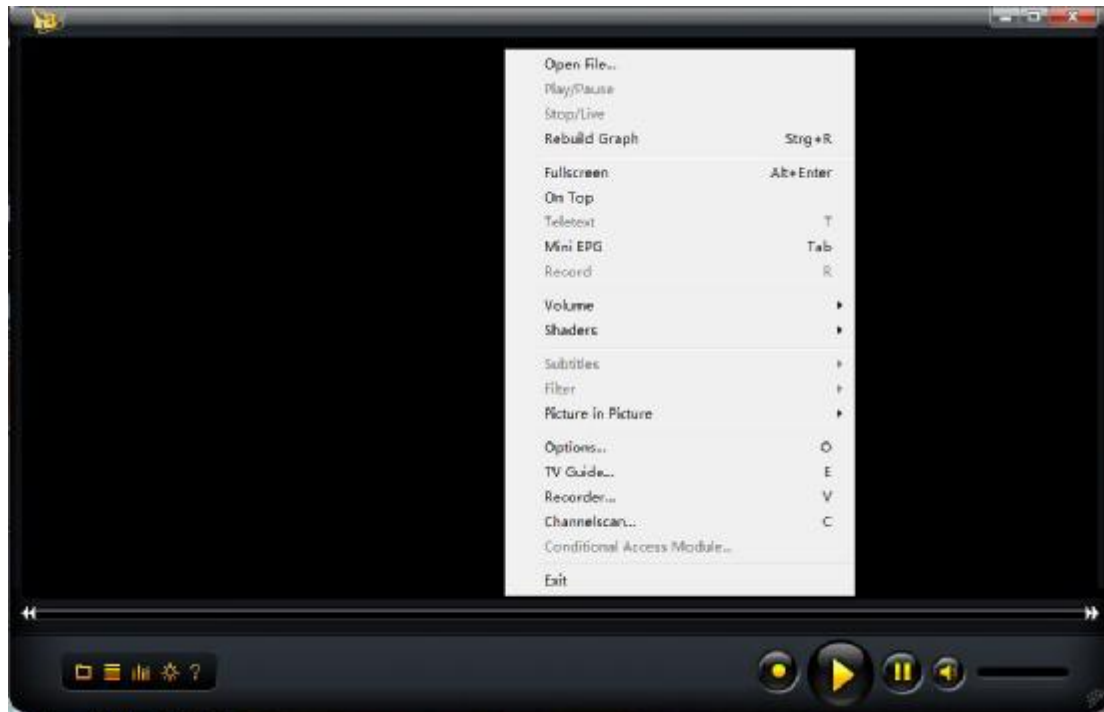
Click **“Hardware”** on option window. If TBS6280 is well installed in the computer, you will see **“TBS 6280 DVBT-T2 Tuner A (1)”** and **“TBS 6280 DVBT-T2 Tuner B (2)”** on a window as follows.



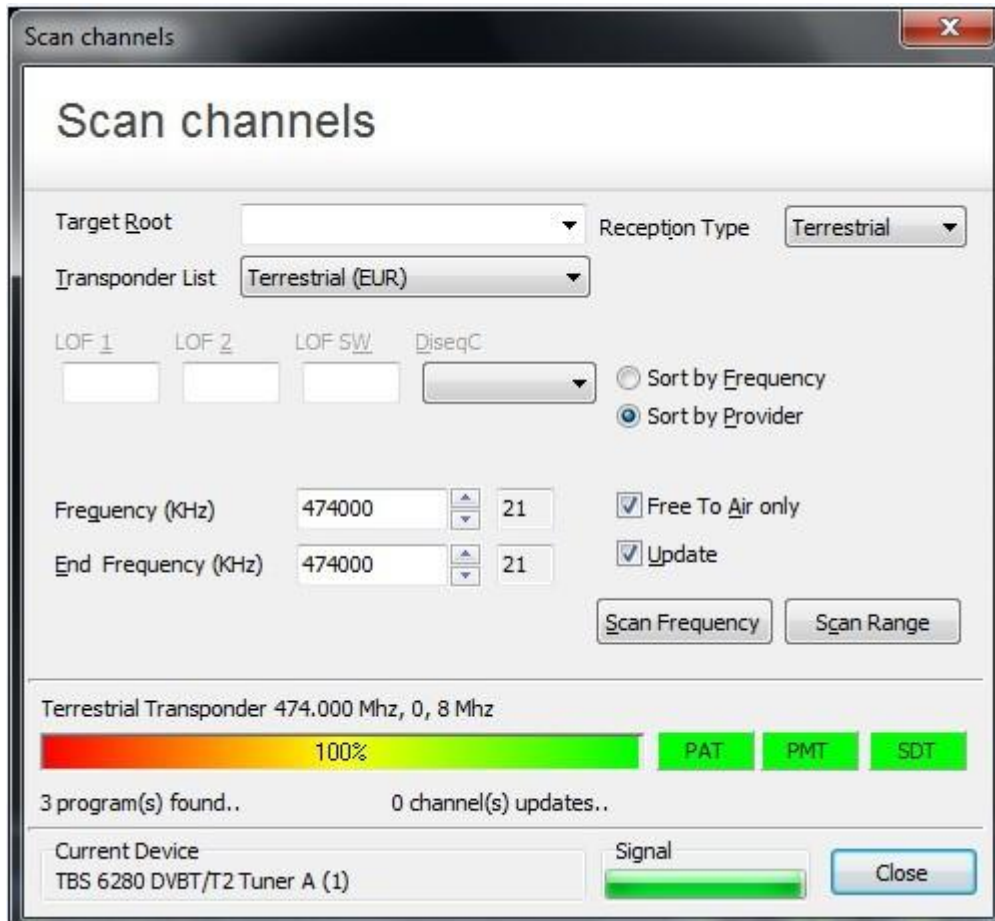
Select one Tuner as “**Preferred**”.

### 3.2. Scan Channels

Back to the menu and click “**Channelscan**”.



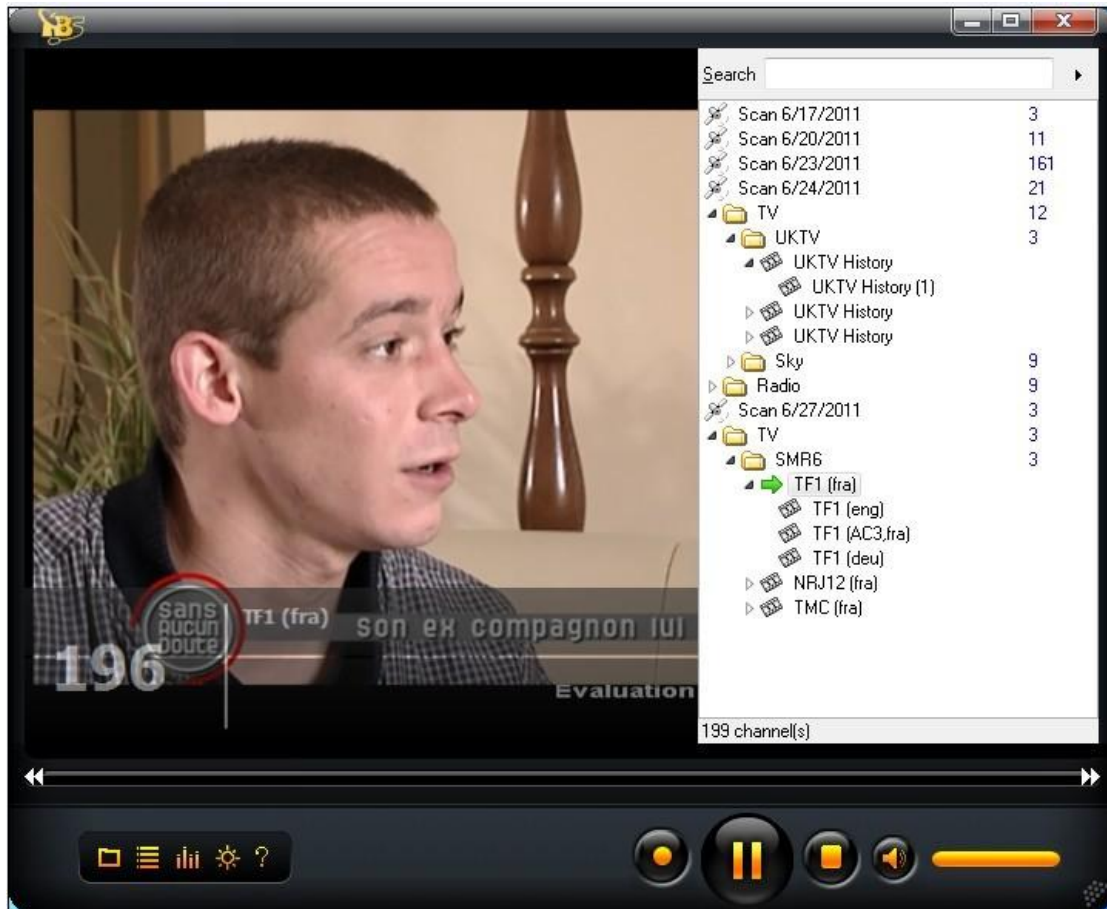
The windows of “**Scan channels**” will pop up. Select Reception Type as “**Terrestrial**” and Select Transponder List basing on where you are. Normally “**Fullscan**” is recommended if you don’t know your terrestrial TV frequency. “**Fullscan**” is relatively slow but it ensures you won’t miss any frequency. Then click “**Scan Range**” to start scan. If you do know your terrestrial TV frequency and you may input that frequency and click “**Scan Frequency**” directly.



After scan is completed, the found program numbers will be shown and the program list will be automatically saved. You can close the “**Scan channels**” window.

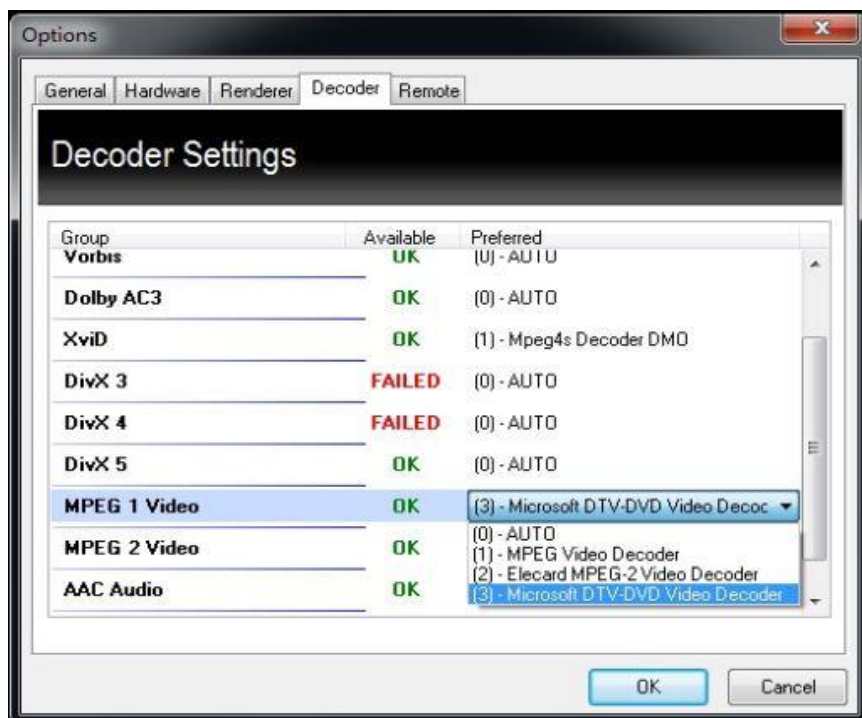
### 3.3. Watch and Record TV

Move the mouse to the edge line of TBSViewer main window on the right, and a channel list window will appear. Double click a channel to watch. You may also use the record button to record live TV.



TBSViewer allows links to different Video/Audio codecs. To change Video/Audio codec, right click to pop up menu window and click the “Options”, enter the “Decoder” menu. Double click related options to select different codecs.

If your system is Windows 7, you can select “Microsoft DTV-DVD Video Decoder” which is bundled in the system.



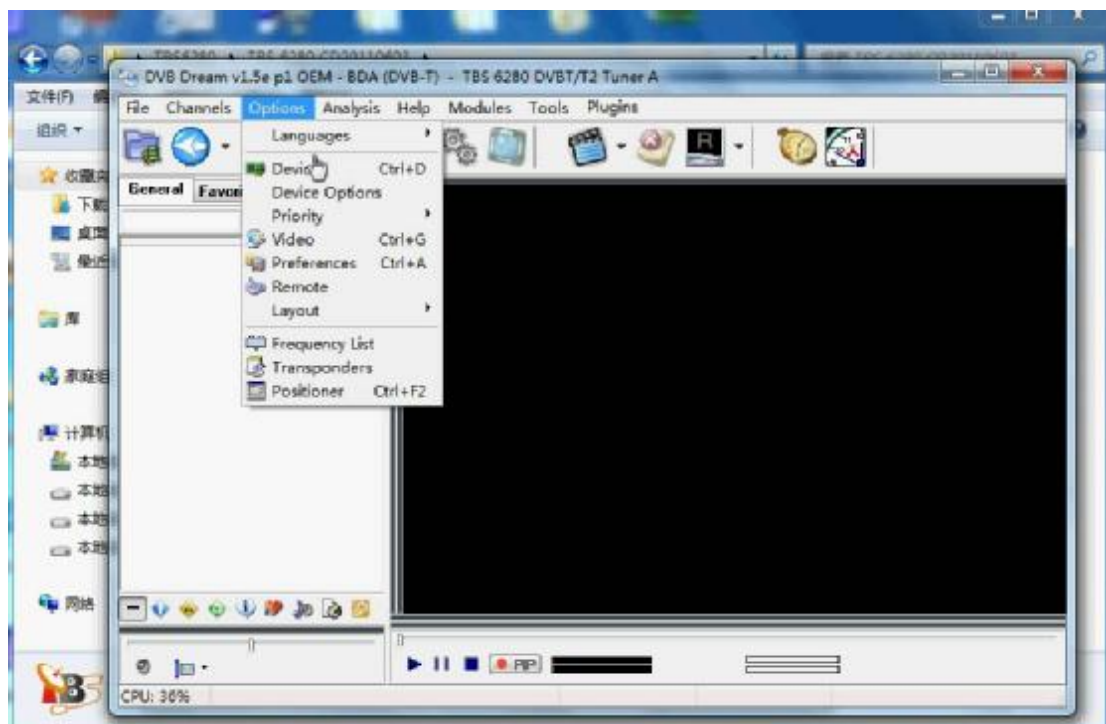
## Chapter 4. Watch TV with DVBDream

### 4.1. Install and use DVBDream

Click **“Install DVBDream”** to start installation, and then click **“Next”** until the installation is completed.



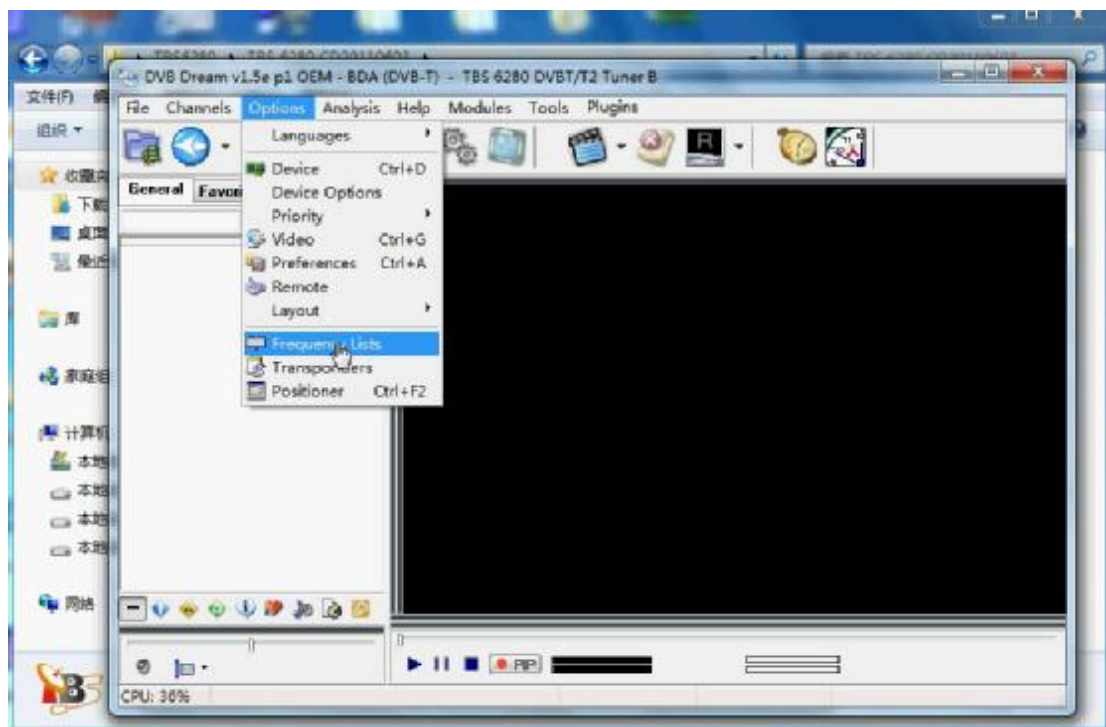
While TBS6220/6280 is installed in your PC, run DVBDream. Click **“Device”** under **“Options”** menu, and you will see TBS model name on the dialog.



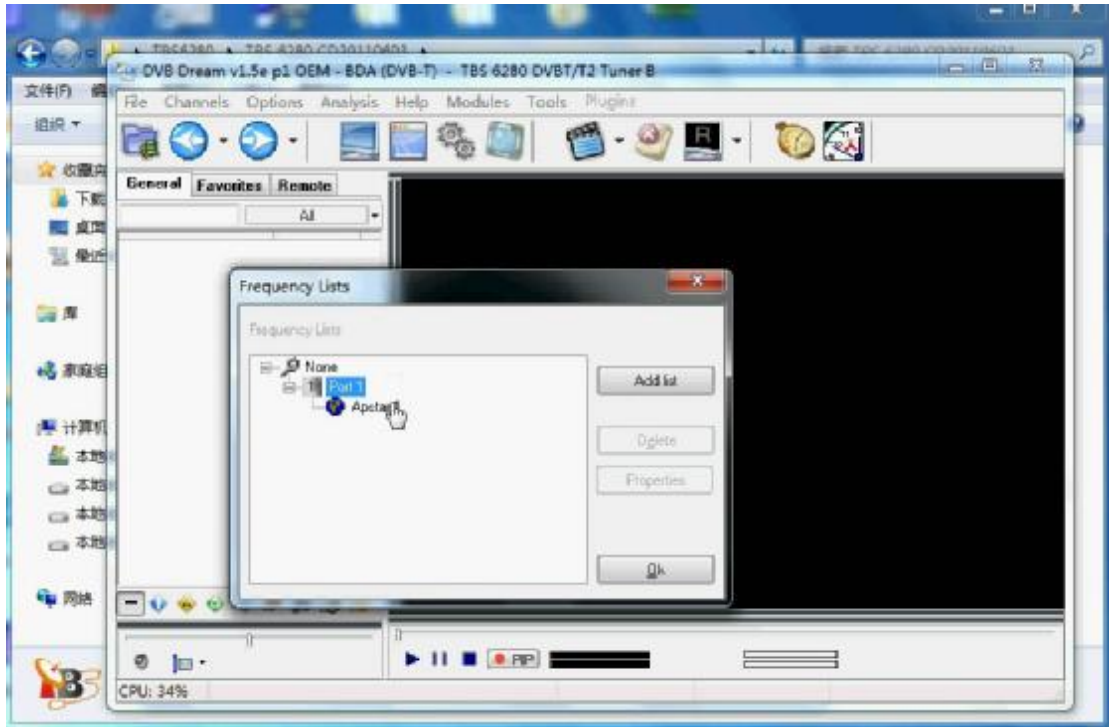
You may click ok or use the UP and Down arrow to select a different Tuner and click start.



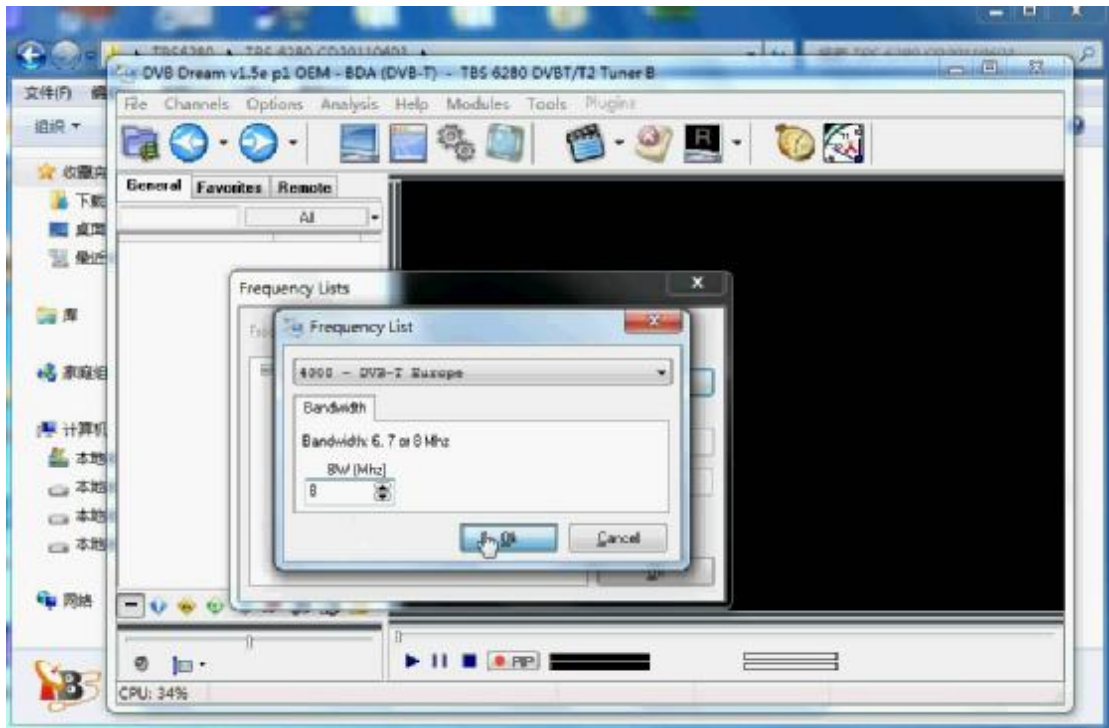
To set up frequency, you could click on “Frequency Lists” under “Options” menu.



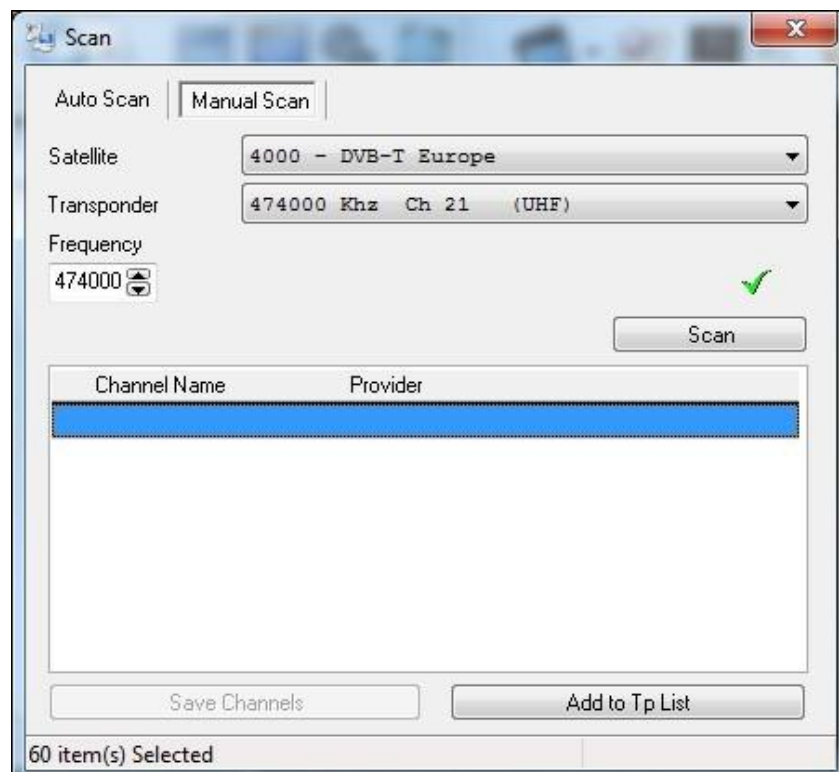
Click “Add list”.



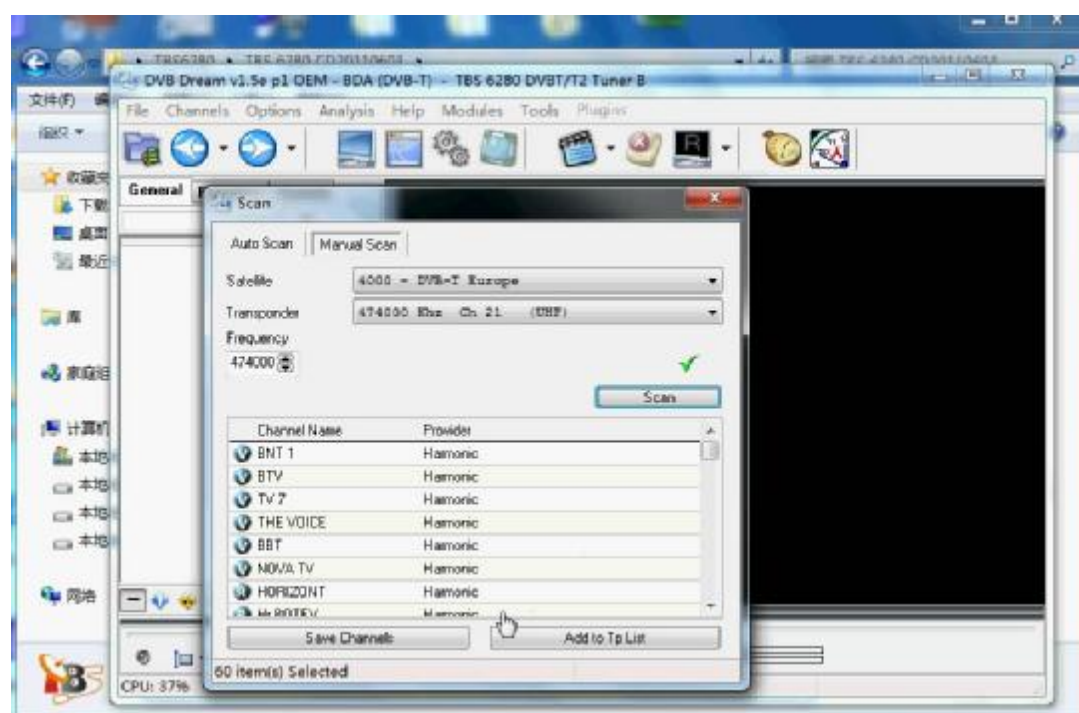
Choose correct location from scroll down menu, and set up Bandwidth. For example, if you are in the United Kingdom, you can choose “**DVB-T Europe**” and 8Mhz bandwidth.



After you have completed the settings, you could click **“Scan”** or **“Manual Scan”** under **“Channels”** menu to search for channels. If you don't know the exact frequency, Auto Scan is recommended.

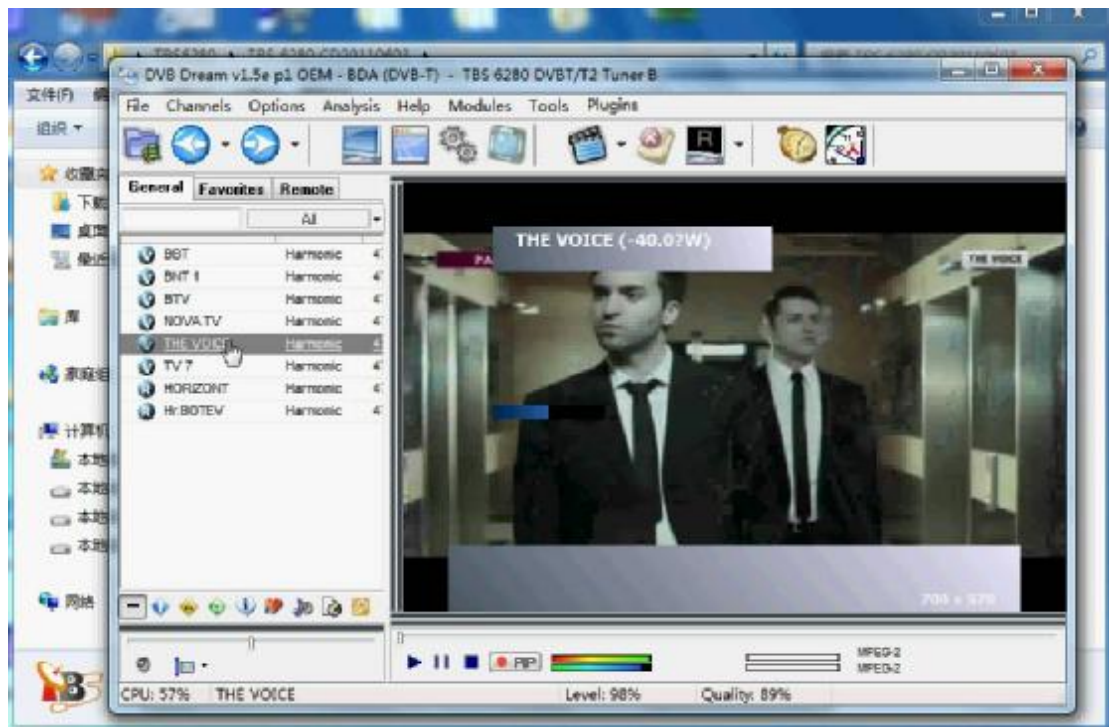


After scanning, the available channels in this frequency will be spotted, so you then could click **“Save Channels”** to save all of them.





Click the channel name you want to watch from the channel list to play that channel.



You may also use the record feature to record live TV.

## **Chapter 5. Watch TV with Windows 7 Media Center**

After TBS6220/6280/6284 is installed in your computer, now you can launch Windows 7 Media Center. Click “settings” under “Tasks” column, and then a new window will pop up. See the screenshot below.



Click “TV” in the new window, and you will see the following window. Then, click “Set Up TV Signal” to proceed.



Then you will see the following window asking you to select your region and input your postal code. If the region is correct, please click “Yes” and “Next”. Otherwise just click “No” and select the correct one again.



Then the window “**Program Guide Terms of Service**” will appear. Select “**I agree**” to continue.



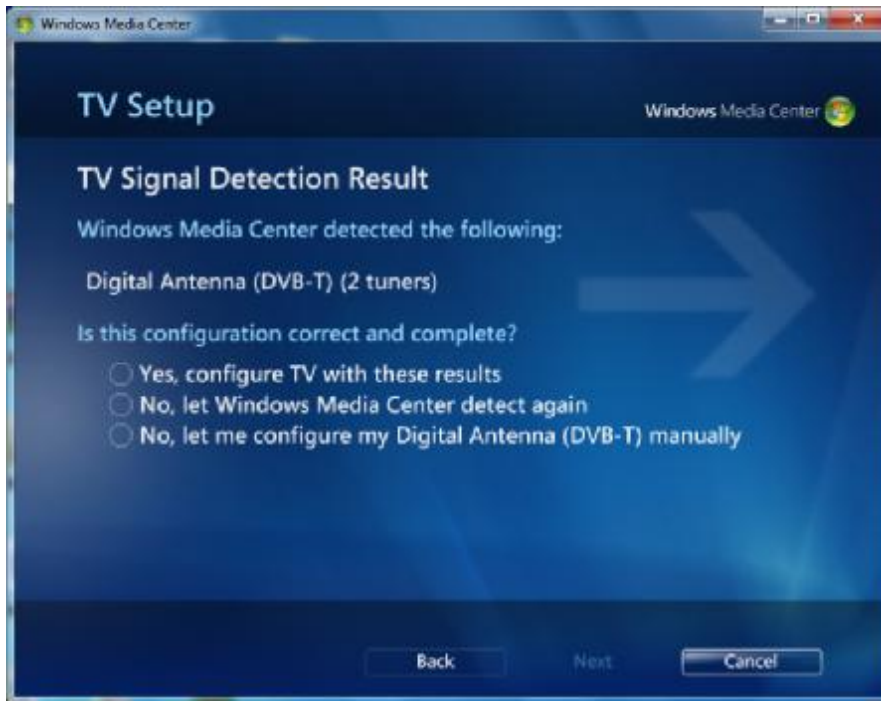
The Windows7 Media Center starts to download digital TV setup data for your region. It will take several minutes, so please wait patiently.



After this, there will be an “**Examining TV Signals**” window popping up. This will also take a few minutes.



After completion, please click “**Next**” to continue. Then a “**TV Signal Detection Result**” window appears.



If you choose “**Yes**” and click “**Next**”, it will start to scan channels. If you choose “**No, let me configure...**” then, there will be a “**TV Tuner Selection**” window appears for you to select the tuner. Select TBS6280 Tuner A or Tuner B to continue scan.





The found channels will be listed below.




Go back to the main menu of Windows 7 Media Center, click “**Live TV**” under the “**TV**” column. Relevant TV programs will start to show, and you can switch to different channels.



To switch channels, you can click the Stop button. Then a list of TV channels will pop up and you can select the one you want to watch.



Here is a picture which explains some shortcuts to control the Media center for you. If you don't see some of the buttons, that's simply because your Windows 7 Media Center window is not large enough. You should enlarge the window by dragging the window frame, or go to full- screen mode by clicking the Maximize button  in the upper-right corner.



- |                    |                  |                   |
|--------------------|------------------|-------------------|
| ① Record           | ⑥ Rewind         | ⑪ Mute            |
| ② Guide            | ⑦ Skip Backward  | ⑫ Volume Decrease |
| ③ Channel Decrease | ⑧ Pause and Play | ⑬ Volume Increase |
| ④ Channel Increase | ⑨ Skip Forward   |                   |
| ⑤ Stop             | ⑩ Fast Forward   |                   |



## **Appendix**

---

1. Check Freeview transmitters at your location and click the transmitter on the map to see Freeview frequencies and program list.

<http://www.ukfree.tv/txlist.php>